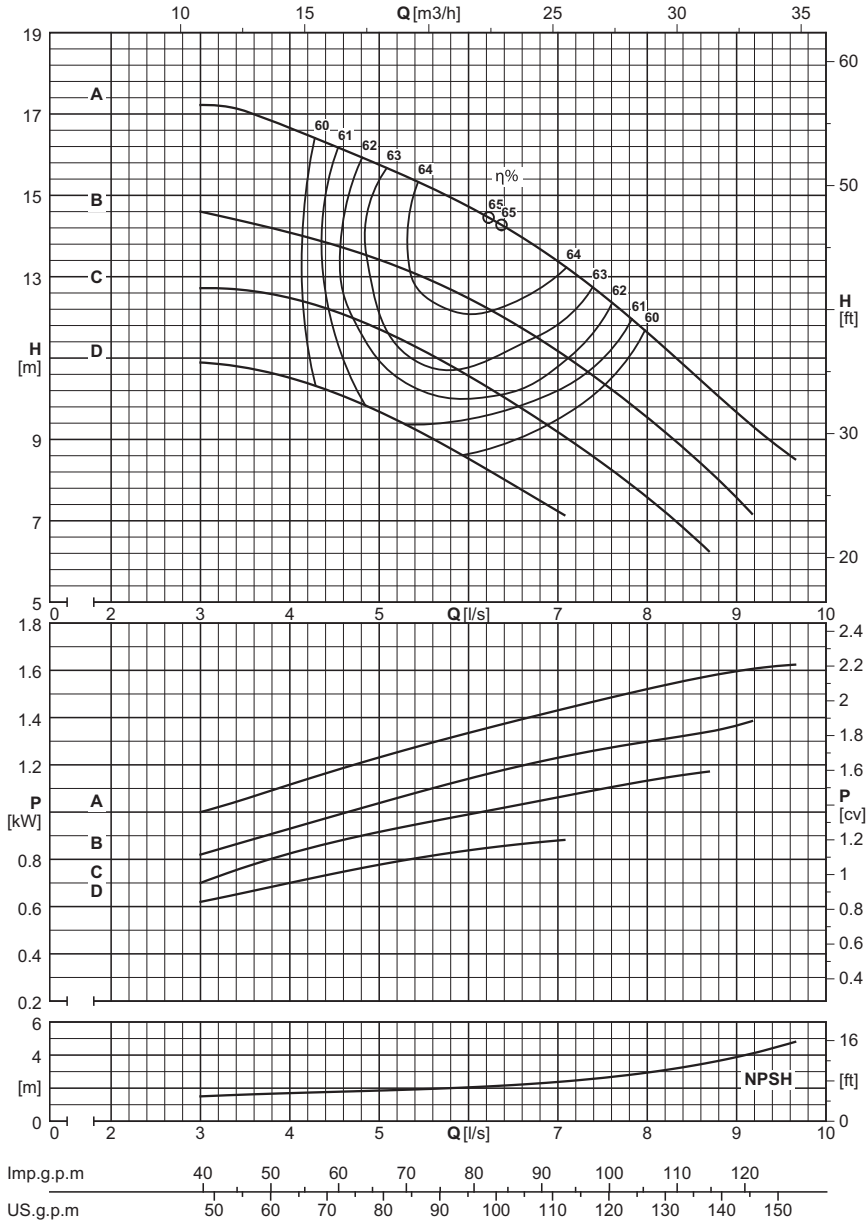


| | | |
|---|------|------|
| Utilization field <i>Champ d'utilisation</i> Campo di utilizzo ≥ 60% η | | |
| Stage number: compatibly with the maximum pressure. <i>Nombre d'étages: compatible avec la pression maximum.</i> Numero stadi: compatibilmente con la pressione massima di esercizio. | | |
| Type <i>Type</i> Tipo | MIN. | MAX. |
| PM | 2 | 15 |
| PMS | 2 | 15 |
| NB. For two-stage pumps only, reduce efficiency by one point. <i>Diminuer le rendement d'un point seulement pour les pompes à deux étages.</i> Solamente per le pompe a due stadi, ridurre di un punto il rendimento. | | |

| | | |
|--|-----------|---|
| Wet moment of inertia J <i>Moment d'inertie J mouillé</i> Momento d'inertzia J bagnato $J = \frac{1}{4}PD^2$ - [kg m ²] | | |
| Impeller type <i>Roue type</i> Girante tipo | PM(S)50/1 | For each additional stage <i>Pour chaque étage en plus</i> Per ogni stadio in più |
| Cast iron <i>Fonte</i> Ghisa | 0,0098 | 0,0087 |
| Bronze <i>Bronze</i> Bronzo | 0,0107 | 0,0097 |

| | | |
|---|----------|--|
| Maximum permissible power <i>Puissances maximums admissibles</i> Massime potenze ammissibili | | |
| Type <i>Type</i> Tipo | N/n MAX. | |
| PM | 0,035 | |
| PMS | 0,035 | |
| For seal limits and calculation formulas of the maximum permissible powers, see technical data section. <i>Consulter la section Données techniques pour connaître les limites des joints et les formules pour le calcul des puissances maximales admises.</i> Per i limiti tenute e le formule di calcolo delle massime potenze ammissibili, vedere sezione dati tecnici. | | |

PERFORMANCES EACH INTERMEDIATE STAGE
CARACTERISTIQUES POUR CHAQUE ETAGE
PRESTAZIONI PER STADIO

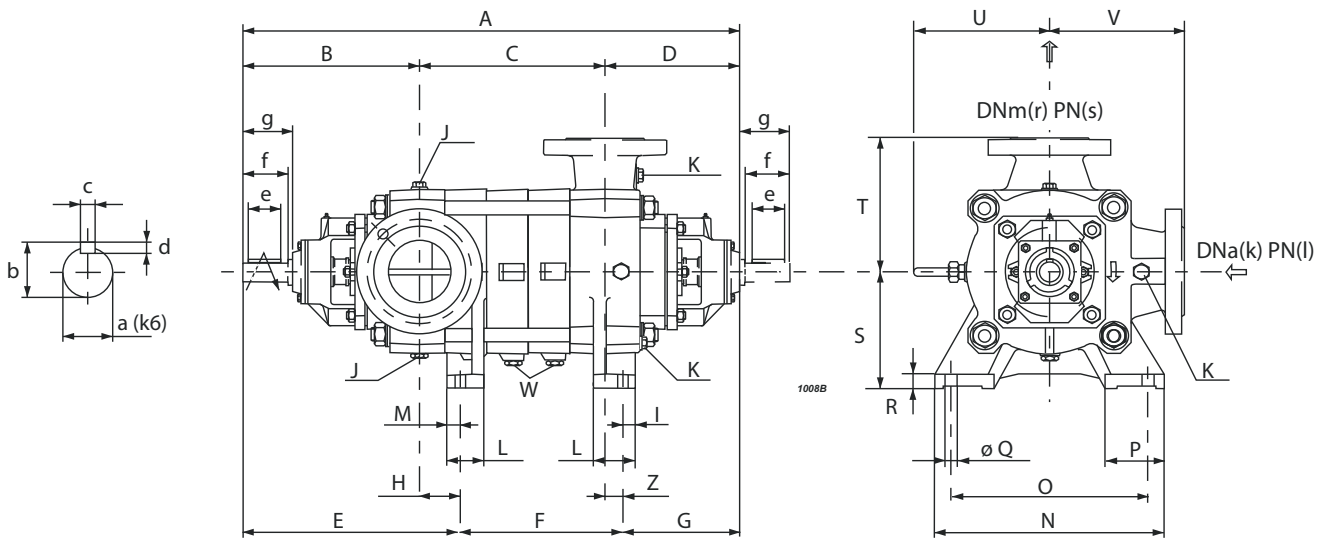


| Dna x DNm | | Impeller type <i>Roue type</i> Girante tipo | [l/s] | 0 | 4 | 4,5 | 5 | 5,5 | 6 | 6,5 | 7 | 7,5 | 8 | | | | | | | |
|-----------|--|---|---------------------|---|------|------|-----|------|------|------|------|-----|------|--|--|--|--|--|--|--|
| | | | [m ³ /h] | 0 | 14,4 | 16,2 | 18 | 19,8 | 21,6 | 23,4 | 25,2 | 27 | 28,8 | | | | | | | |
| | | | [l/min] | 0 | 240 | 270 | 300 | 330 | 360 | 390 | 420 | 450 | 480 | | | | | | | |

| | | | PM(S)50/1 | | | | | | | | | | | | | | | | | |
|-------|---|------|-----------|------|-----|------|-----|------|-----|------|------|------|--|--|--|--|--|--|--|--|
| 65x50 | D | [m] | 9,9 | 10,5 | 10 | 9,6 | 9,2 | 8,5 | 7,9 | | | | | | | | | | | |
| 65x50 | D | [kW] | | 0,7 | 0,7 | 0,8 | 0,8 | 0,8 | 0,9 | | | | | | | | | | | |
| 65x50 | C | [m] | 11,5 | 12 | 12 | 12 | 11 | 10,5 | 9,9 | 9,2 | | | | | | | | | | |
| 65x50 | C | [kW] | | 0,8 | 0,9 | 0,9 | 1 | 1 | 1 | 1,1 | | | | | | | | | | |
| 65x50 | B | [m] | 13,5 | 14,5 | 14 | 13,5 | 13 | 12,5 | 12 | 11 | 10,5 | 9,6 | | | | | | | | |
| 65x50 | B | [kW] | | 0,9 | 1 | 1 | 1,1 | 1,1 | 1,2 | 1,2 | 1,3 | 1,3 | | | | | | | | |
| 65x50 | A | [m] | 17 | 17 | 16 | 16,5 | 15 | 15 | 14 | 13,5 | 12,5 | 11,5 | | | | | | | | |
| 65x50 | A | [kW] | | 1,1 | 1,2 | 1,2 | 1,3 | 1,3 | 1,4 | 1,4 | 1,5 | 1,5 | | | | | | | | |

| | | | NPSH | | | | | | | | | | | | | | | | | |
|--|--|-----|------|-----|-----|-----|-----|---|-----|-----|-----|---|--|--|--|--|--|--|--|--|
| | | [m] | | 1,7 | 1,8 | 1,9 | 1,9 | 2 | 2,2 | 2,4 | 2,6 | 3 | | | | | | | | |

Overall dimensions and weights
 Dimensions d'encombrement et poids
 Dimensioni di ingombro e pesi



| Series Série Serie | Type Type Tipo | A | B | C | D | E | F | G | H | S | T | U | V | Z | Weight Poids Peso |
|--------------------------|----------------------|------|-----|-----|-----|-----|-----|-----|----|-----|-----|-----|-----|----|-------------------------|
| | | [mm] | | | | | | | | | | | | | [kg] |
| PM(S) | 50/2 | 653 | 289 | 137 | 227 | 356 | 100 | 197 | 67 | 180 | 195 | 232 | 195 | 30 | 99 |
| PM(S) | 50/3 | 713 | 289 | 197 | 227 | 356 | 160 | 197 | 67 | 180 | 195 | 232 | 195 | 30 | 111 |
| PM(S) | 50/4 | 773 | 289 | 257 | 227 | 356 | 220 | 197 | 67 | 180 | 195 | 232 | 195 | 30 | 123 |
| PM(S) | 50/5 | 833 | 289 | 317 | 227 | 356 | 280 | 197 | 67 | 180 | 195 | 232 | 195 | 30 | 135 |
| PM(S) | 50/6 | 893 | 289 | 377 | 227 | 356 | 340 | 197 | 67 | 180 | 195 | 232 | 195 | 30 | 147 |
| PM(S) | 50/7 | 953 | 289 | 437 | 227 | 356 | 400 | 197 | 67 | 180 | 195 | 232 | 195 | 30 | 159 |
| PM(S) | 50/8 | 1013 | 289 | 497 | 227 | 356 | 460 | 197 | 67 | 180 | 195 | 232 | 195 | 30 | 171 |
| PM(S) | 50/9 | 1073 | 289 | 557 | 227 | 356 | 520 | 197 | 67 | 180 | 195 | 232 | 195 | 30 | 183 |
| PM(S) | 50/10 | 1133 | 289 | 617 | 227 | 356 | 580 | 197 | 67 | 180 | 195 | 232 | 195 | 30 | 195 |
| PM(S) | 50/11 | 1193 | 289 | 677 | 227 | 356 | 640 | 197 | 67 | 180 | 195 | 232 | 195 | 30 | 207 |
| PM(S) | 50/12 | 1253 | 289 | 737 | 227 | 356 | 700 | 197 | 67 | 180 | 195 | 232 | 195 | 30 | 219 |
| PM(S) | 50/13 | 1313 | 289 | 797 | 227 | 356 | 760 | 197 | 67 | 180 | 195 | 232 | 195 | 30 | 231 |
| PM(S) | 50/14 | 1373 | 289 | 857 | 227 | 356 | 820 | 197 | 67 | 180 | 195 | 232 | 195 | 30 | 243 |
| PM(S) | 50/15 | 1433 | 289 | 917 | 227 | 356 | 880 | 197 | 67 | 180 | 195 | 232 | 195 | 30 | 255 |

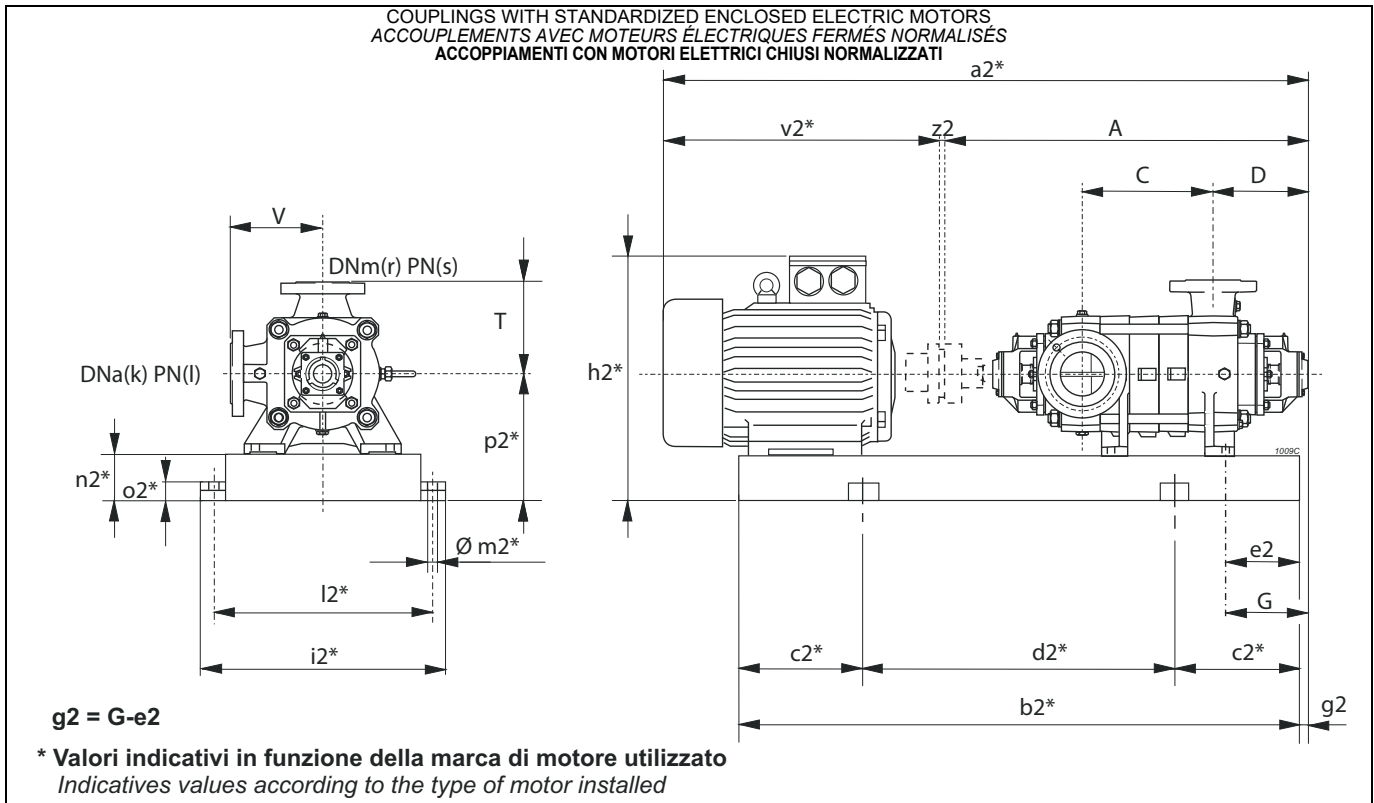
| Foot dimensions Dimensions des pieds Dimensioni dei piedi | | | | | | | |
|---|----|----|-----|-----|----|----|----|
| I | L | M | N | O | P | Q | R |
| [mm] | | | | | | | |
| 43 | 60 | 40 | 370 | 320 | 90 | 18 | 23 |

| Shaft projection Saille d'arbre Sporgenza d'albero | | | | | | | |
|--|----|---|---|----|----|------|--|
| a | b | c | d | e | f | g | |
| [mm] | | | | | | | |
| 27 | 30 | 8 | 7 | 55 | 70 | 79,5 | |

| Flanges Brides Flange | | | | |
|-----------------------------|------------|-----------|------------|-----------|
| Type Type Tipo | (k) DNa | (l) PN | (r) DNm | (s) PN |
| | [mm] | [bar] | [mm] | [bar] |
| PM | 65 | 25 | 50 | 40 |
| PMS | 65 | 25 | 50 | 63 |

| Plugs Bouchons Tappi | | |
|----------------------------|------|-------|
| J | K | W |
| G 1/2 | G3/8 | G 1/4 |

Selection - dimensions and weights for base mounted electric pumps
 Sélection - dimensions et poids des électropompes sur socle
 Selezione - dimensioni e pesi elettropompe su base



| Pump Pompe Pompa | | Motor Moteur Motore | | BGAM | A | C | D | G | T | V | a2* | b2* | c2* | d2* | e2 | h2* | i2* | k | l | l2* | m2* | n2* | o2* | p2* | r | s | v2* | z2 | Weight Poids Peso | | |
|-------------------------|----------------------|---------------------------|--------------------------|----------------------|--------|-----|-----|-----|-----|-----|--------|------|-----|------|----|-----|-----|----|----|-----|-----|-----|-----|-----|----|-----|------|----|-------------------------|--|------|
| Serie Série Serie | Type Type Tipo | [kW] | Size Taille Grand. | Type Type Tipo | [mm] | | | | | | | | | | | | | | | | | | | | | | | | | | [kg] |
| PM(S) | 50/2 | 11 | 160M | 876/DM | 652,5 | 137 | 227 | 197 | 195 | 195 | 1283,5 | 993 | 150 | 693 | 40 | 531 | 500 | 65 | 25 | 450 | 20 | 100 | 42 | 280 | 50 | (2) | 627 | 4 | 267 | | |
| PM(S) | /2 | 15 | 160M | 876/DM | 652,5 | 137 | 227 | 197 | 195 | 195 | 1283,5 | 993 | 150 | 693 | 40 | 531 | 500 | 65 | 25 | 450 | 20 | 100 | 42 | 280 | 50 | (2) | 627 | 4 | 278 | | |
| PM(S) | 50/3 | 15 | 160M | 877/DM | 712,5 | 197 | 227 | 197 | 195 | 195 | 1343,5 | 1053 | 200 | 653 | 40 | 531 | 500 | 65 | 25 | 450 | 20 | 100 | 42 | 280 | 50 | (2) | 627 | 4 | 291 | | |
| PM(S) | /3 | 18,5 | 160L | 878/DM | 712,5 | 197 | 227 | 197 | 195 | 195 | 1343,5 | 1097 | 200 | 697 | 40 | 531 | 500 | 65 | 25 | 450 | 20 | 100 | 42 | 280 | 50 | (2) | 627 | 4 | 304 | | |
| PM(S) | /3 | 22 | 180M | 879/EM | 712,5 | 197 | 227 | 197 | 195 | 195 | 1381,5 | 1107 | 200 | 707 | 40 | 550 | 500 | 65 | 25 | 450 | 20 | 100 | 42 | 280 | 50 | (2) | 665 | 4 | 344 | | |
| PM(S) | 50/4 | 18,5 | 160L | 880/DM | 772,5 | 257 | 227 | 197 | 195 | 195 | 1403,5 | 1157 | 200 | 757 | 40 | 531 | 500 | 65 | 25 | 450 | 20 | 100 | 42 | 280 | 50 | (2) | 627 | 4 | 317 | | |
| PM(S) | /4 | 22 | 180M | 881/EM | 772,5 | 257 | 227 | 197 | 195 | 195 | 1441,5 | 1167 | 200 | 767 | 40 | 550 | 500 | 65 | 25 | 450 | 20 | 100 | 42 | 280 | 50 | (2) | 665 | 4 | 357 | | |
| PM(S) | /4 | 30 | 200L | 882/FM | 772,5 | 257 | 227 | 197 | 195 | 195 | 1514,5 | 1260 | 200 | 860 | 60 | 600 | 540 | 65 | 25 | 490 | 20 | 100 | 42 | 300 | 50 | (2) | 738 | 4 | 419 | | |
| PM(S) | 50/5 | 22 | 180M | 883/EM | 832,5 | 317 | 227 | 197 | 195 | 195 | 1501,5 | 1227 | 200 | 827 | 40 | 550 | 500 | 65 | 25 | 450 | 20 | 100 | 42 | 280 | 50 | (2) | 665 | 4 | 370 | | |
| PM(S) | /5 | 30 | 200L | 884/FM | 832,5 | 317 | 227 | 197 | 195 | 195 | 1574,5 | 1320 | 200 | 920 | 60 | 600 | 540 | 65 | 25 | 490 | 20 | 100 | 42 | 300 | 50 | (2) | 738 | 4 | 432 | | |
| PM(S) | /5 | 37 | 200L | 884/FM | 832,5 | 317 | 227 | 197 | 195 | 195 | 1574,5 | 1320 | 200 | 920 | 60 | 600 | 540 | 65 | 25 | 490 | 20 | 100 | 42 | 300 | 50 | (2) | 738 | 4 | 460 | | |
| PM(S) | 50/6 | 30 | 200L | 885/FM | 892,5 | 377 | 227 | 197 | 195 | 195 | 1634,5 | 1380 | 250 | 880 | 60 | 600 | 540 | 65 | 25 | 490 | 20 | 100 | 42 | 300 | 50 | (2) | 738 | 4 | 445 | | |
| PM(S) | /6 | 37 | 200L | 885/FM | 892,5 | 377 | 227 | 197 | 195 | 195 | 1634,5 | 1380 | 250 | 880 | 60 | 600 | 540 | 65 | 25 | 490 | 20 | 100 | 42 | 300 | 50 | (2) | 738 | 4 | 473 | | |
| PM(S) | /6 | 45 | 225M | 886/FM | 892,5 | 377 | 227 | 197 | 195 | 195 | 1671,5 | 1416 | 250 | 916 | 70 | 675 | 585 | 65 | 25 | 535 | 20 | 120 | 42 | 345 | 50 | (2) | 775 | 4 | 549 | | |
| PM(S) | 50/7 | 30 | 200L | 887/FM | 952,5 | 437 | 227 | 197 | 195 | 195 | 1694,5 | 1440 | 250 | 940 | 60 | 600 | 540 | 65 | 25 | 490 | 20 | 100 | 42 | 300 | 50 | (2) | 738 | 4 | 459 | | |
| PM(S) | /7 | 37 | 200L | 887/FM | 952,5 | 437 | 227 | 197 | 195 | 195 | 1694,5 | 1440 | 250 | 940 | 60 | 600 | 540 | 65 | 25 | 490 | 20 | 100 | 42 | 300 | 50 | (2) | 738 | 4 | 487 | | |
| PM(S) | /7 | 45 | 225M | 888/FM | 952,5 | 437 | 227 | 197 | 195 | 195 | 1731,5 | 1476 | 250 | 976 | 70 | 675 | 585 | 65 | 25 | 535 | 20 | 120 | 42 | 345 | 50 | (2) | 775 | 4 | 563 | | |
| PM(S) | /7 | 55 | 250M | 889/GM | 952,5 | 437 | 227 | 197 | 195 | 195 | 1826,5 | 1558 | 250 | 1058 | 80 | 745 | 635 | 65 | 25 | 585 | 20 | 120 | 42 | 370 | 50 | (2) | 870 | 4 | 673 | | |
| PM(S) | 50/8 | 37 | 200L | 890/FM | 1012,5 | 497 | 227 | 197 | 195 | 195 | 1754,5 | 1500 | 250 | 1000 | 60 | 600 | 540 | 65 | 25 | 490 | 20 | 100 | 42 | 300 | 50 | (2) | 738 | 4 | 500 | | |
| PM(S) | /8 | 45 | 225M | 891/FM | 1012,5 | 497 | 227 | 197 | 195 | 195 | 1791,5 | 1536 | 250 | 1036 | 70 | 675 | 585 | 65 | 25 | 535 | 20 | 120 | 42 | 345 | 50 | (2) | 775 | 4 | 576 | | |
| PM(S) | /8 | 55 | 250M | 892/GM | 1012,5 | 497 | 227 | 197 | 195 | 195 | 1886,5 | 1618 | 250 | 1118 | 80 | 745 | 635 | 65 | 25 | 585 | 20 | 120 | 42 | 370 | 50 | (2) | 870 | 4 | 686 | | |
| PM(S) | /8 | 75 | 280S | 893/HM | 1012,5 | 497 | 227 | 197 | 195 | 195 | 2016,5 | 1675 | 300 | 1075 | 90 | 815 | 695 | 65 | 25 | 645 | 20 | 140 | 42 | 420 | 50 | (2) | 1000 | 4 | 917 | | |
| PM(S) | 50/9 | 45 | 225M | 894/FM | 1072,5 | 557 | 227 | 197 | 195 | 195 | 1851,5 | 1596 | 250 | 1096 | 70 | 675 | 585 | 65 | 25 | 535 | 20 | 120 | 42 | 345 | 50 | (2) | 775 | 4 | 590 | | |
| PM(S) | /9 | 55 | 250M | 895/GM | 1072,5 | 557 | 227 | 197 | 195 | 195 | 1946,5 | 1678 | 300 | 1078 | 80 | 745 | 635 | 65 | 25 | 585 | 20 | 120 | 42 | 370 | 50 | (2) | 870 | 4 | 700 | | |
| PM(S) | /9 | 75 | 280S | 896/HM | 1072,5 | 557 | 227 | 197 | 195 | 195 | 2076,5 | 1735 | 300 | 1135 | 90 | 815 | 695 | 65 | 25 | 645 | 20 | 140 | 42 | 420 | 50 | (2) | 1000 | 4 | 931 | | |
| PM(S) | 50/10 | 45 | 225M | 897/FM | 1132,5 | 617 | 227 | 197 | 195 | 195 | 1911,5 | 1656 | 300 | 1056 | 70 | 675 | 585 | 65 | 25 | 535 | 20 | 120 | 42 | 345 | 50 | (2) | 775 | 4 | 604 | | |
| PM(S) | /10 | 55 | 250M | 898/GM | 1132,5 | 617 | 227 | 197 | 195 | 195 | 2006,5 | 1738 | 300 | 1138 | 80 | 745 | 635 | 65 | 25 | 585 | 20 | 120 | 42 | 370 | 50 | (2) | 870 | 4 | 713 | | |
| PM(S) | /10 | 75 | 280S | 899/HM | 1132,5 | 617 | 227 | 197 | 195 | 195 | 2136,5 | 1795 | 300 | 1195 | 90 | 815 | 695 | 65 | 25 | 645 | 20 | 140 | 42 | 420 | 50 | (2) | 1000 | 4 | 945 | | |
| PM(S) | /10 | 90 | 280M | 900/HM | 1132,5 | 617 | 227 | 197 | 195 | 195 | 2187,5 | 1846 | 300 | 1246 | 90 | 815 | 695 | 65 | 25 | 645 | 20 | 140 | 42 | 420 | 50 | (2) | 1051 | 4 | 1074 | | |

BGAM = Base and coupling

* = Indicatives values according to the type of motor installed.

○ Motor in IE4 efficiency class according to EU REGULATION 2019/1781. Available in other efficiency classes for non-EU markets.

(2) PM=40 bar PMS=63 bar

BGAM = Socle et accouplement

* = Valeurs indicatives en fonction de la marque du moteur utilisé.

○ Moteur en classe de rendement IE4 conformément au RÈGLEMENT UE2019/1781. Disponibilité en différentes classes de rendement pour les marchés hors UE.

(2) PM=40 bar PMS=63 bar

BGAM = Base giunto e coprigiunto

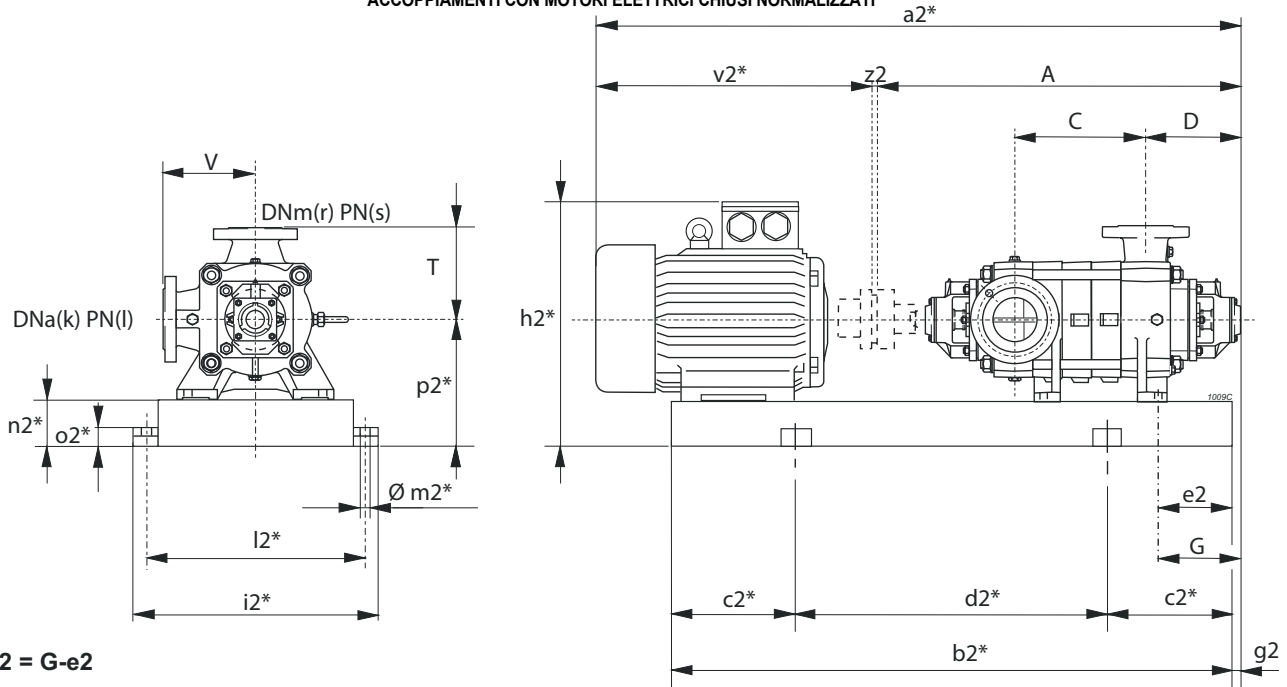
* = Valori indicativi in funzione della marca di motore utilizzato.

○ Motore in classe di efficienza IE4 in conformità al REGOLAMENTO UE2019/1781. Disponibili in altre classi di efficienza per mercati extra UE.

(2) PM=40 bar PMS=63 bar

Selection - dimensions and weights for base mounted electric pumps
 Sélection - dimensions et poids des électropompes sur socle
 Selezione - dimensioni e pesi elettropompe su base

COUPLINGS WITH STANDARDIZED ENCLOSED ELECTRIC MOTORS
 ACCOUPLEMENTS AVEC MOTEURS ÉLECTRIQUES FERMÉS NORMALISÉS
 ACCOPIAMENTI CON MOTORI ELETTRICI CHIUSI NORMALIZZATI



* Valori indicativi in funzione della marca di motore utilizzato
 Indicatives values according to the type of motor installed

| Pump Pompe Pompa | Motor Moteur Motore | BGAM | A | C | D | G | T | V | a2* | b2* | c2* | d2* | e2 | h2* | i2* | k | l | l2* | m2* | n2* | o2* | p2* | r | s | v2* | z2 | Weight Poids Peso | | |
|--------------------------|---------------------------|------|--------------------------|----------------------|--------|-----|-----|-----|-----|-----|--------|------|-----|------|-----|------|-----|-----|-----|-----|-----|-----|----|-----|------|-----|-------------------------|---|------|
| Series Série Serie | Type Type Tipo | [kW] | Size Taille Grand. | Type Type Tipo | [mm] | | | | | | | | | | | | | | | | | | | | [kg] | | | | |
| PM(S) | 50/11 | 55 | 250M | 901/GM | 1192,5 | 677 | 227 | 197 | 195 | 195 | 2066,5 | 1798 | 300 | 1198 | 80 | 745 | 635 | 65 | 25 | 585 | 20 | 120 | 42 | 370 | 50 | (2) | 870 | 4 | 727 |
| PM(S) | /11 | 75 | 280S | 902/HM | 1192,5 | 677 | 227 | 197 | 195 | 195 | 2196,5 | 1855 | 300 | 1255 | 90 | 815 | 695 | 65 | 25 | 645 | 20 | 140 | 42 | 420 | 50 | (2) | 1000 | 4 | 959 |
| PM(S) | /11 | 90 | 280M | 903/HM | 1192,5 | 677 | 227 | 197 | 195 | 195 | 2247,5 | 1906 | 300 | 1306 | 90 | 815 | 695 | 65 | 25 | 645 | 20 | 140 | 42 | 420 | 50 | (2) | 1051 | 4 | 1087 |
| PM(S) | 50/12 | 55 | 250M | 904/GM | 1252,5 | 737 | 227 | 197 | 195 | 195 | 2126,5 | 1858 | 300 | 1258 | 80 | 745 | 635 | 65 | 25 | 585 | 20 | 120 | 42 | 370 | 50 | (2) | 870 | 4 | 741 |
| PM(S) | /12 | 75 | 280S | 905/HM | 1252,5 | 737 | 227 | 197 | 195 | 195 | 2256,5 | 1915 | 300 | 1315 | 90 | 815 | 695 | 65 | 25 | 645 | 20 | 140 | 42 | 420 | 50 | (2) | 1000 | 4 | 973 |
| PM(S) | /12 | 90 | 280M | 906/HM | 1252,5 | 737 | 227 | 197 | 195 | 195 | 2307,5 | 1966 | 350 | 1266 | 90 | 815 | 695 | 65 | 25 | 645 | 20 | 140 | 42 | 420 | 50 | (2) | 1051 | 4 | 1101 |
| PM(S) | /12 | 110 | 315S | 907/IM | 1252,5 | 737 | 227 | 197 | 195 | 195 | 2437,5 | 2022 | 350 | 1322 | 100 | 1030 | 780 | 65 | 25 | 730 | 22 | 160 | 50 | 475 | 50 | (2) | 1181 | 4 | 1378 |
| PM(S) | 50/13 | 75 | 280S | 908/HM | 1312,5 | 797 | 227 | 197 | 195 | 195 | 2316,5 | 1975 | 350 | 1275 | 90 | 815 | 695 | 65 | 25 | 645 | 20 | 140 | 42 | 420 | 50 | (2) | 1000 | 4 | 987 |
| PM(S) | /13 | 90 | 280M | 909/HM | 1312,5 | 797 | 227 | 197 | 195 | 195 | 2367,5 | 2026 | 350 | 1326 | 90 | 815 | 695 | 65 | 25 | 645 | 20 | 140 | 42 | 420 | 50 | (2) | 1051 | 4 | 1115 |
| PM(S) | /13 | 110 | 315S | 910/IM | 1312,5 | 797 | 227 | 197 | 195 | 195 | 2497,5 | 2082 | 350 | 1382 | 100 | 1030 | 780 | 65 | 25 | 730 | 22 | 160 | 50 | 475 | 50 | (2) | 1181 | 4 | 1392 |
| PM(S) | 50/14 | 75 | 280S | 911/HM | 1372,5 | 857 | 227 | 197 | 195 | 195 | 2376,5 | 2035 | 350 | 1335 | 90 | 815 | 695 | 65 | 25 | 645 | 20 | 140 | 42 | 420 | 50 | (2) | 1000 | 4 | 1001 |
| PM(S) | /14 | 90 | 280M | 912/HM | 1372,5 | 857 | 227 | 197 | 195 | 195 | 2427,5 | 2086 | 350 | 1386 | 90 | 815 | 695 | 65 | 25 | 645 | 20 | 140 | 42 | 420 | 50 | (2) | 1051 | 4 | 1129 |
| PM(S) | /14 | 110 | 315S | 913/IM | 1372,5 | 857 | 227 | 197 | 195 | 195 | 2557,5 | 2142 | 350 | 1442 | 100 | 1030 | 780 | 65 | 25 | 730 | 22 | 160 | 50 | 475 | 50 | (2) | 1181 | 4 | 1406 |
| PM(S) | 50/15 | 75 | 280S | 9911/HM | 1432,5 | 917 | 227 | 197 | 195 | 195 | 2436,5 | 2095 | 350 | 1395 | 90 | 815 | 695 | 65 | 25 | 645 | 20 | 140 | 42 | 420 | 50 | (2) | 1000 | 4 | 1014 |
| PM(S) | /15 | 90 | 280M | 9912/HM | 1432,5 | 917 | 227 | 197 | 195 | 195 | 2487,5 | 2146 | 350 | 1446 | 90 | 815 | 695 | 65 | 25 | 645 | 20 | 140 | 42 | 420 | 50 | (2) | 1051 | 4 | 1143 |
| PM(S) | /15 | 110 | 315S | 914/IM | 1432,5 | 917 | 227 | 197 | 195 | 195 | 2617,5 | 2202 | 350 | 1502 | 100 | 1030 | 780 | 65 | 25 | 730 | 22 | 160 | 50 | 475 | 50 | (2) | 1181 | 4 | 1420 |
| PM(S) | /15 | 132 | 315M | 9913/IM | 1432,5 | 917 | 227 | 197 | 195 | 195 | 2727,5 | 2261 | 400 | 1461 | 100 | 1030 | 780 | 65 | 25 | 730 | 22 | 160 | 50 | 475 | 50 | (2) | 1291 | 4 | 1494 |

BGAM = Base and coupling

* = Indicatives values according to the type of motor installed.

○ Motor in IE4 efficiency class according to EU REGULATION 2019/1781. Available in other efficiency classes for non-EU markets.

(2) PM=40 bar PMS=63 bar

BGAM = Socle et accouplement

* = Valeurs indicatives en fonction de la marque du moteur utilisé.

○ Moteur en classe de rendement IE4 conformément au RÈGLEMENT UE2019/1781. Disponibilité en différentes classes de rendement pour les marchés hors UE.

(2) PM=40 bar PMS=63 bar

BGAM = Base giunto e coprigiunto

* = Valori indicativi in funzione della marca di motore utilizzato.

○ Motore in classe di efficienza IE4 in conformità al REGOLAMENTO UE2019/1781. Disponibili in altre classi di efficienza per mercati extra UE.

(2) PM=40 bar PMS=63 bar

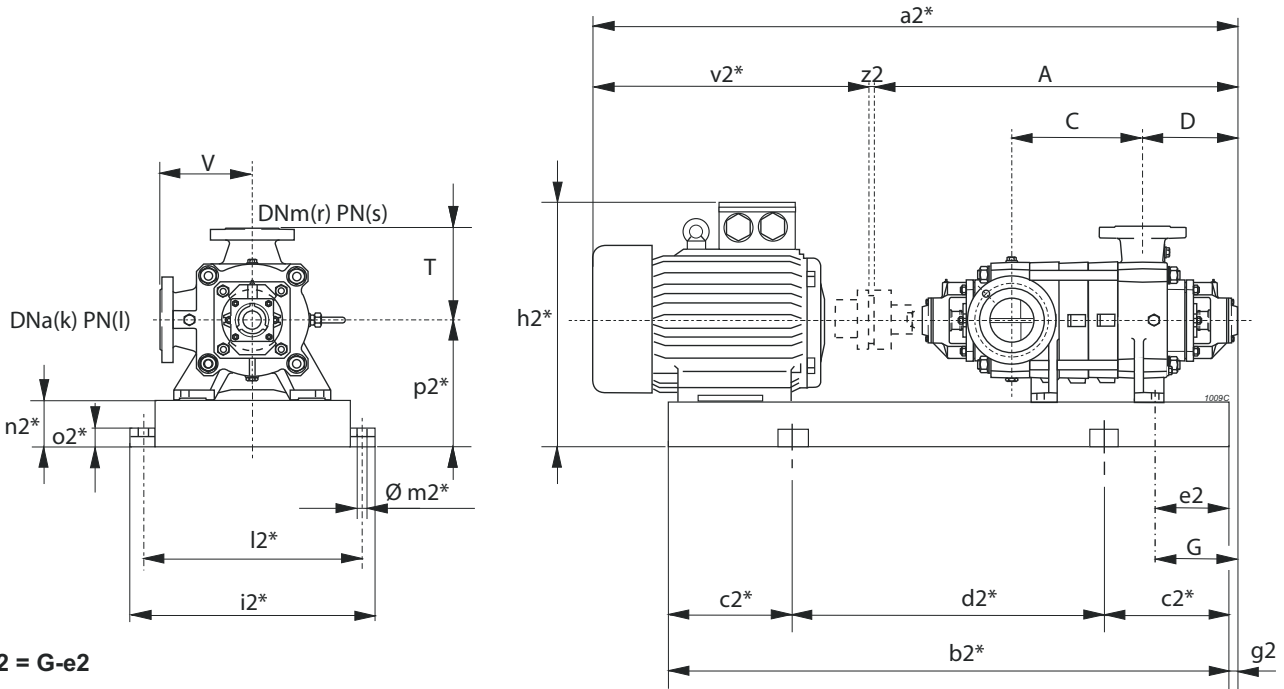
PM 50

4P / 50Hz



Selection - dimensions and weights for base mounted electric pumps
Sélection - dimensions et poids des électropompes sur socle
 Selezione - dimensioni e pesi elettropompe su base

COUPLINGS WITH STANDARDIZED ENCLOSED ELECTRIC MOTORS
 ACCOUPLEMENTS AVEC MOTEURS ÉLECTRIQUES FERMÉS NORMALISÉS
 ACCOPIAMENTI CON MOTORI ELETTRICI CHIUSI NORMALIZZATI



$g2 = G - e2$

* Valori indicativi in funzione della marca di motore utilizzato
Indicatives values according to the type of motor installed

| Pump Pompe Pompa | | Motor Moteur Motore | | BGAM | A | C | D | G | T | V | a2* | b2* | c2* | d2* | e2 | h2* | i2* | k | l | l2* | m2* | n2* | o2* | p2* | r | s | v2* | z2 | Weight Poids Peso | |
|--------------------------|----------------------|---------------------------|--------------------------|----------------------|--------|-----|-----|-----|-----|-----|--------|------|-----|------|----|-----|-----|----|----|-----|-----|-----|-----|-----|----|-----|-----|----|-------------------------|------|
| Series Série Serie | Type Type Tipo | [kW] | Size Taille Grand. | Type Type Tipo | [mm] | | | | | | | | | | | | | | | | | | | | | | | | | [kg] |
| PM(S) | 50/2 | 1,1 | 90S | 951/CL | 652,5 | 137 | 227 | 197 | 195 | 195 | 1011,5 | 741 | 100 | 541 | 40 | 418 | 500 | 65 | 25 | 450 | 20 | 100 | 42 | 280 | 50 | (2) | 355 | 4 | 153 | |
| PM(S) | /2 | 1,5 | 90L | 915/CL | 652,5 | 137 | 227 | 197 | 195 | 195 | 1041,5 | 766 | 150 | 466 | 40 | 418 | 500 | 65 | 25 | 450 | 20 | 100 | 42 | 280 | 50 | (2) | 385 | 4 | 158 | |
| PM(S) | /2 | 2,2 | 100L | 9917/CL | 652,5 | 137 | 227 | 197 | 195 | 195 | 1061,5 | 801 | 150 | 501 | 40 | 430 | 500 | 65 | 25 | 450 | 20 | 100 | 42 | 280 | 50 | (2) | 405 | 4 | 171 | |
| PM(S) | 50/3 | 1,5 | 90L | 916/CL | 712,5 | 197 | 227 | 197 | 195 | 195 | 1101,5 | 826 | 150 | 526 | 40 | 418 | 500 | 65 | 25 | 450 | 20 | 100 | 42 | 280 | 50 | (2) | 385 | 4 | 171 | |
| PM(S) | /3 | 2,2 | 100L | 917/CL | 712,5 | 197 | 227 | 197 | 195 | 195 | 1121,5 | 861 | 150 | 561 | 40 | 430 | 500 | 65 | 25 | 450 | 20 | 100 | 42 | 280 | 50 | (2) | 405 | 4 | 184 | |
| PM(S) | /3 | 3 | 100L | 917/CL | 712,5 | 197 | 227 | 197 | 195 | 195 | 1121,5 | 861 | 150 | 561 | 40 | 430 | 500 | 65 | 25 | 450 | 20 | 100 | 42 | 280 | 50 | (2) | 405 | 4 | 188 | |
| PM(S) | 50/4 | 2,2 | 100L | 918/CL | 772,5 | 257 | 227 | 197 | 195 | 195 | 1181,5 | 921 | 150 | 621 | 40 | 430 | 500 | 65 | 25 | 450 | 20 | 100 | 42 | 280 | 50 | (2) | 405 | 4 | 197 | |
| PM(S) | /4 | 3 | 100L | 918/CL | 772,5 | 257 | 227 | 197 | 195 | 195 | 1181,5 | 921 | 150 | 621 | 40 | 430 | 500 | 65 | 25 | 450 | 20 | 100 | 42 | 280 | 50 | (2) | 405 | 4 | 201 | |
| PM(S) | /4 | 4 | 112M | 919/CL | 772,5 | 257 | 227 | 197 | 195 | 195 | 1216,5 | 928 | 150 | 628 | 40 | 452 | 500 | 65 | 25 | 450 | 20 | 100 | 42 | 280 | 50 | (2) | 440 | 4 | 203 | |
| PM(S) | 50/5 | 3 | 100L | 920/CL | 832,5 | 317 | 227 | 197 | 195 | 195 | 1241,5 | 981 | 150 | 681 | 40 | 430 | 500 | 65 | 25 | 450 | 20 | 100 | 42 | 280 | 50 | (2) | 405 | 4 | 214 | |
| PM(S) | /5 | 4 | 112M | 921/CL | 832,5 | 317 | 227 | 197 | 195 | 195 | 1276,5 | 988 | 150 | 688 | 40 | 452 | 500 | 65 | 25 | 450 | 20 | 100 | 42 | 280 | 50 | (2) | 440 | 4 | 216 | |
| PM(S) | /5 | 5,5 | 132S | 922/DL | 832,5 | 317 | 227 | 197 | 195 | 195 | 1291,5 | 1049 | 150 | 749 | 40 | 472 | 500 | 65 | 25 | 450 | 20 | 100 | 42 | 280 | 50 | (2) | 455 | 4 | 226 | |
| PM(S) | 50/6 | 3 | 100L | 923/CL | 892,5 | 377 | 227 | 197 | 195 | 195 | 1301,5 | 1041 | 150 | 741 | 40 | 430 | 500 | 65 | 25 | 450 | 20 | 100 | 42 | 280 | 50 | (2) | 405 | 4 | 228 | |
| PM(S) | /6 | 4 | 112M | 924/CL | 892,5 | 377 | 227 | 197 | 195 | 195 | 1336,5 | 1048 | 150 | 748 | 40 | 452 | 500 | 65 | 25 | 450 | 20 | 100 | 42 | 280 | 50 | (2) | 440 | 4 | 229 | |
| PM(S) | /6 | 5,5 | 132S | 925/DL | 892,5 | 377 | 227 | 197 | 195 | 195 | 1351,5 | 1109 | 200 | 709 | 40 | 472 | 500 | 65 | 25 | 450 | 20 | 100 | 42 | 280 | 50 | (2) | 455 | 4 | 239 | |
| PM(S) | 50/7 | 4 | 112M | 926/CL | 952,5 | 437 | 227 | 197 | 195 | 195 | 1396,5 | 1108 | 200 | 708 | 40 | 452 | 500 | 65 | 25 | 450 | 20 | 100 | 42 | 280 | 50 | (2) | 440 | 4 | 242 | |
| PM(S) | /7 | 5,5 | 132S | 927/DL | 952,5 | 437 | 227 | 197 | 195 | 195 | 1411,5 | 1169 | 200 | 769 | 40 | 472 | 500 | 65 | 25 | 450 | 20 | 100 | 42 | 280 | 50 | (2) | 455 | 4 | 252 | |
| PM(S) | /7 | 7,5 | 132M | 928/DL | 952,5 | 437 | 227 | 197 | 195 | 195 | 1446,5 | 1207 | 200 | 807 | 40 | 472 | 500 | 65 | 25 | 450 | 20 | 100 | 42 | 280 | 50 | (2) | 490 | 4 | 261 | |
| PM(S) | 50/8 | 4 | 112M | 929/CL | 1012,5 | 497 | 227 | 197 | 195 | 195 | 1456,5 | 1168 | 200 | 768 | 40 | 452 | 500 | 65 | 25 | 450 | 20 | 100 | 42 | 280 | 50 | (2) | 440 | 4 | 256 | |
| PM(S) | /8 | 5,5 | 132S | 930/DL | 1012,5 | 497 | 227 | 197 | 195 | 195 | 1471,5 | 1229 | 200 | 829 | 40 | 472 | 500 | 65 | 25 | 450 | 20 | 100 | 42 | 280 | 50 | (2) | 455 | 4 | 266 | |
| PM(S) | /8 | 7,5 | 132M | 931/DL | 1012,5 | 497 | 227 | 197 | 195 | 195 | 1506,5 | 1267 | 200 | 867 | 40 | 472 | 500 | 65 | 25 | 450 | 20 | 100 | 42 | 280 | 50 | (2) | 490 | 4 | 274 | |
| PM(S) | 50/9 | 5,5 | 132S | 932/DL | 1072,5 | 557 | 227 | 197 | 195 | 195 | 1531,5 | 1289 | 200 | 889 | 40 | 472 | 500 | 65 | 25 | 450 | 20 | 100 | 42 | 280 | 50 | (2) | 455 | 4 | 279 | |
| PM(S) | /9 | 7,5 | 132M | 933/DL | 1072,5 | 557 | 227 | 197 | 195 | 195 | 1566,5 | 1327 | 200 | 927 | 40 | 472 | 500 | 65 | 25 | 450 | 20 | 100 | 42 | 280 | 50 | (2) | 490 | 4 | 287 | |
| PM(S) | /9 | 11 | 160M | 952/EM | 1072,5 | 557 | 227 | 197 | 195 | 195 | 1703,5 | 1413 | 250 | 913 | 40 | 531 | 500 | 65 | 25 | 450 | 20 | 100 | 42 | 280 | 50 | (2) | 627 | 4 | 374 | |
| PM(S) | 50/10 | 5,5 | 132S | 934/DL | 1132,5 | 617 | 227 | 197 | 195 | 195 | 1591,5 | 1349 | 200 | 949 | 40 | 472 | 500 | 65 | 25 | 450 | 20 | 100 | 42 | 280 | 50 | (2) | 455 | 4 | 292 | |
| PM(S) | /10 | 7,5 | 132M | 935/DL | 1132,5 | 617 | 227 | 197 | 195 | 195 | 1626,5 | 1387 | 250 | 887 | 40 | 472 | 500 | 65 | 25 | 450 | 20 | 100 | 42 | 280 | 50 | (2) | 490 | 4 | 301 | |
| PM(S) | /10 | 11 | 160M | 936/EM | 1132,5 | 617 | 227 | 197 | 195 | 195 | 1763,5 | 1473 | 250 | 973 | 40 | 531 | 500 | 65 | 25 | 450 | 20 | 100 | 42 | 280 | 50 | (2) | 627 | 4 | 387 | |
| PM(S) | 50/11 | 7,5 | 132M | 937/DL | 1192,5 | 677 | 227 | 197 | 195 | 195 | 1686,5 | 1447 | 250 | 947 | 40 | 472 | 500 | 65 | 25 | 450 | 20 | 100 | 42 | 280 | 50 | (2) | 490 | 4 | 314 | |
| PM(S) | /11 | 11 | 160M | 938/EM | 1192,5 | 677 | 227 | 197 | 195 | 195 | 1823,5 | 1533 | 250 | 1033 | 40 | 531 | 500 | 65 | 25 | 450 | 20 | 100 | 42 | 280 | 50 | (2) | 627 | 4 | 400 | |
| PM(S) | 50/12 | 7,5 | 132M | 939/DL | 1252,5 | 737 | 227 | 197 | 195 | 195 | 1746,5 | 1507 | 250 | 1007 | 40 | 472 | 500 | 65 | 25 | 450 | 20 | 100 | 42 | 280 | 50 | (2) | 490 | 4 | 327 | |
| PM(S) | /12 | 11 | 160M | 940/EM | 1252,5 | 737 | 227 | 197 | 195 | 195 | 1883,5 | 1593 | 250 | 1093 | 40 | 531 | 500 | 65 | 25 | 450 | 20 | 100 | 42 | 280 | 50 | (2) | 627 | 4 | 413 | |
| PM(S) | /12 | 15 | 160L | 941/EM | 1252,5 | 737 | 227 | 197 | 195 | 195 | 1883,5 | 1637 | 250 | 1137 | 40 | 531 | 500 | 65 | 25 | 450 | 20 | 100 | 42 | 280 | 50 | (2) | 627 | 4 | 426 | |

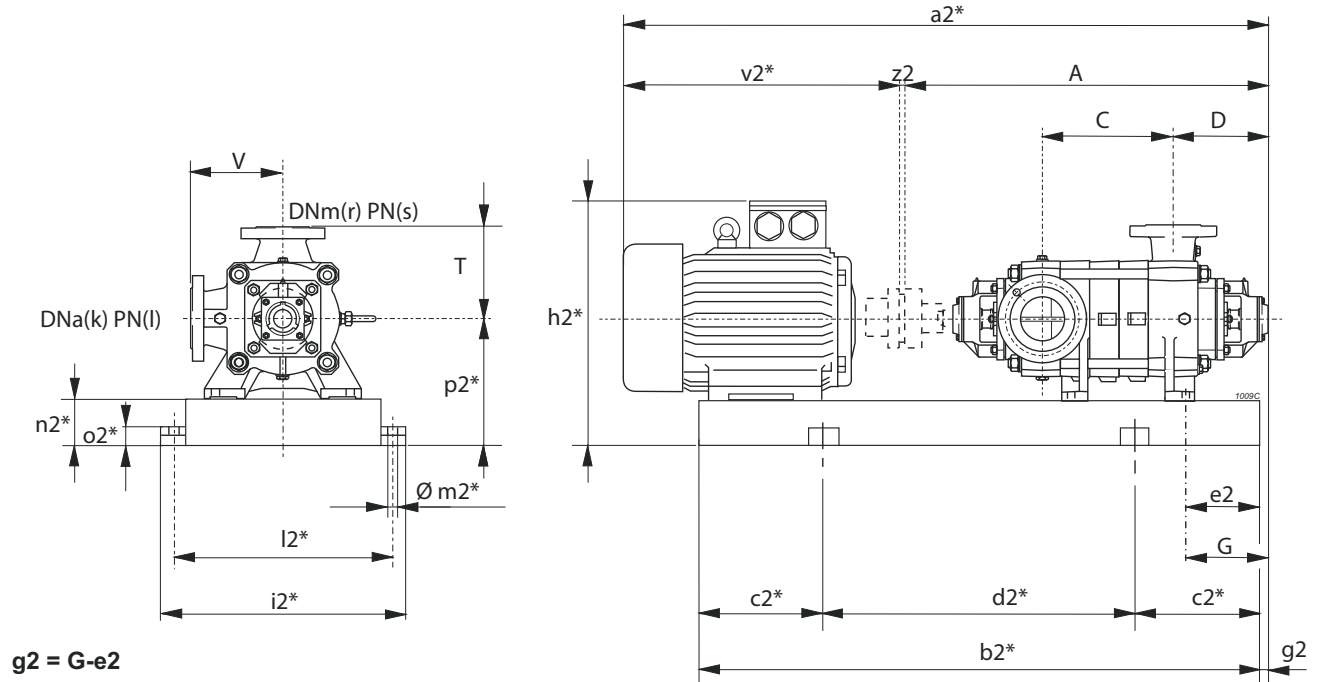
BGAM = Base and coupling
 * = Indicatives values according to the type of motor installed.
 (2) PM=40 bar PMS=63 bar

BGAM = Socle et accouplement
 * = Valeurs indicatives en fonction de la marque du moteur utilisé.
 (2) PM=40 bar PMS=63 bar

BGAM = Base giunto e coprigiunto
 * = Valori indicativi in funzione della marca di motore utilizzato.
 (2) PM=40 bar PMS=63 bar

Selection - dimensions and weights for base mounted electric pumps
 Sélection - dimensions et poids des électropompes sur socle
 Selezione - dimensioni e pesi elettropompe su base

COUPLINGS WITH STANDARDIZED ENCLOSED ELECTRIC MOTORS
 ACCOUPLEMENTS AVEC MOTEURS ÉLECTRIQUES FERMÉS NORMALISÉS
 ACCOPIAMENTI CON MOTORI ELETTRICI CHIUSI NORMALIZZATI



g2 = G-e2

* Valori indicativi in funzione della marca di motore utilizzato
 Indicatives values according to the type of motor installed

| Pump Pompe Pompa | | Motor Moteur Motore | | BGAM | A | C | D | G | T | V | a2* | b2* | c2* | d2* | e2 | h2* | i2* | k | l | l2* | m2* | n2* | o2* | p2* | r | s | v2* | z2 | Weight Poids Peso |
|--------------------------|----------------------|---------------------------|--------------------------|----------------------|--------|-----|-----|-----|-----|-----|--------|------|-----|------|----|-----|-----|----|----|-----|-----|-----|-----|-----|----|-----|-----|----|-------------------------|
| Series Série Serie | Type Type Tipo | [kW] | Size Taille Grand. | Type Type Tipo | [mm] | | | | | | | | | | | | | | | | | | | | | | | | [kg] |
| PM(S) | 50/13 | 7,5 | 132M | 942/DL | 1312,5 | 797 | 227 | 197 | 195 | 195 | 1806,5 | 1567 | 250 | 1067 | 40 | 472 | 500 | 65 | 25 | 450 | 20 | 100 | 42 | 280 | 50 | (2) | 490 | 4 | 341 |
| PM(S) | /13 | 11 | 160M | 943/EM | 1312,5 | 797 | 227 | 197 | 195 | 195 | 1943,5 | 1653 | 300 | 1053 | 40 | 531 | 500 | 65 | 25 | 450 | 20 | 100 | 42 | 280 | 50 | (2) | 627 | 4 | 427 |
| PM(S) | /13 | 15 | 160L | 944/EM | 1312,5 | 797 | 227 | 197 | 195 | 195 | 1943,5 | 1697 | 300 | 1097 | 40 | 531 | 500 | 65 | 25 | 450 | 20 | 100 | 42 | 280 | 50 | (2) | 627 | 4 | 440 |
| PM(S) | 50/14 | 7,5 | 132M | 945/DL | 1372,5 | 857 | 227 | 197 | 195 | 195 | 1866,5 | 1627 | 250 | 1127 | 40 | 472 | 500 | 65 | 25 | 450 | 20 | 100 | 42 | 280 | 50 | (2) | 490 | 4 | 354 |
| PM(S) | /14 | 11 | 160M | 946/EM | 1372,5 | 857 | 227 | 197 | 195 | 195 | 2003,5 | 1713 | 300 | 1113 | 40 | 531 | 500 | 65 | 25 | 450 | 20 | 100 | 42 | 280 | 50 | (2) | 627 | 4 | 440 |
| PM(S) | /14 | 15 | 160L | 947/EM | 1372,5 | 857 | 227 | 197 | 195 | 195 | 2003,5 | 1757 | 300 | 1157 | 40 | 531 | 500 | 65 | 25 | 450 | 20 | 100 | 42 | 280 | 50 | (2) | 627 | 4 | 453 |
| PM(S) | 50/15 | 11 | 160M | 949/EM | 1432,5 | 917 | 227 | 197 | 195 | 195 | 2063,5 | 1773 | 300 | 1173 | 40 | 531 | 500 | 65 | 25 | 450 | 20 | 100 | 42 | 280 | 50 | (2) | 627 | 4 | 453 |
| PM(S) | /15 | 15 | 160L | 950/EM | 1432,5 | 917 | 227 | 197 | 195 | 195 | 2063,5 | 1817 | 300 | 1217 | 40 | 531 | 500 | 65 | 25 | 450 | 20 | 100 | 42 | 280 | 50 | (2) | 627 | 4 | 466 |

BGAM = Base and coupling

* = Indicatives values according to the type of motor installed.

(2) PM=40 bar PMS=63 bar

BGAM = Socle et accouplement

* = Valeurs indicatives en fonction de la marque du moteur utilisé.

(2) PM=40 bar PMS=63 bar

BGAM = Base giunto e coprigiunto

* = Valori indicativi in funzione della marca di motore utilizzato.

(2) PM=40 bar PMS=63 bar