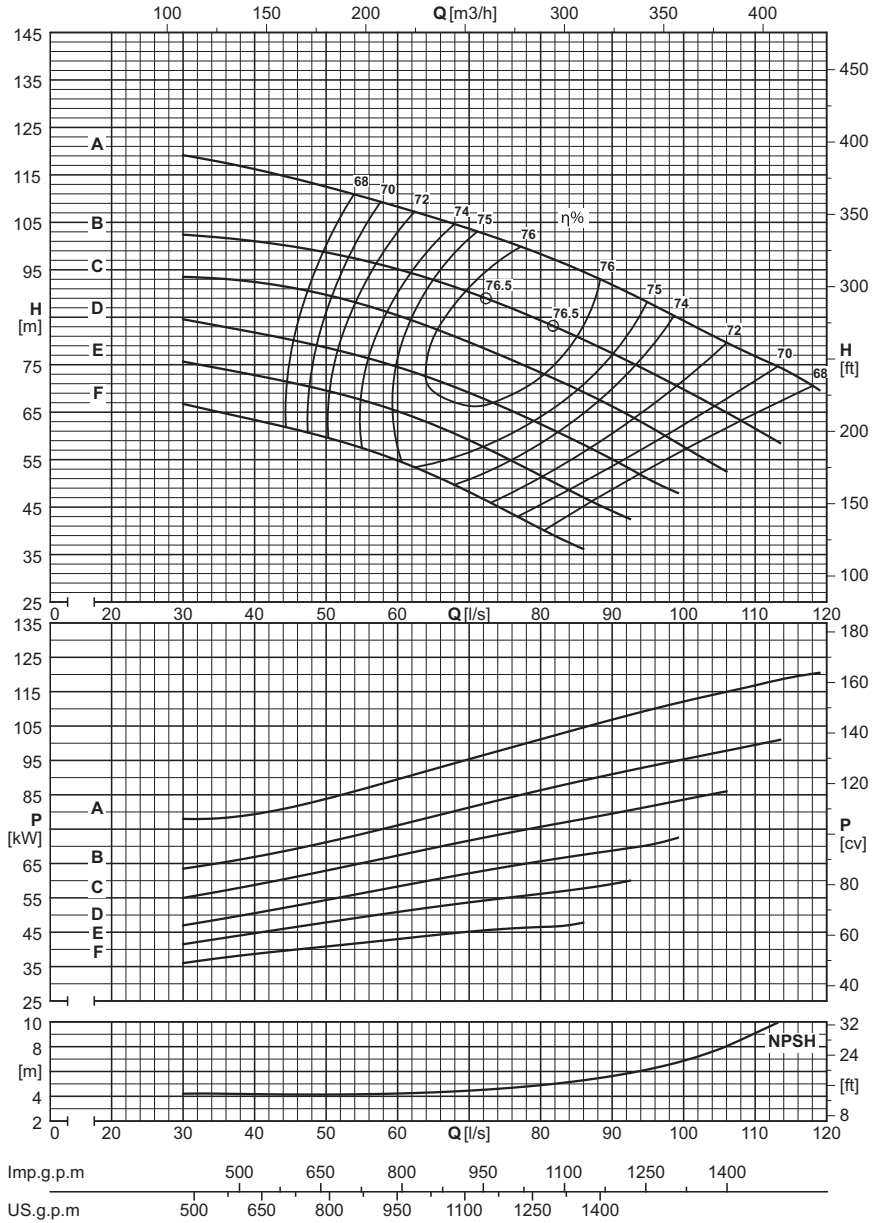


|  |      |      |
|--|------|------|
| Utilization field / Champ d'utilisation / Campo di utilizzo<br>≥ 65% η   |      |      |
| Stage number: compatibly with the maximum pressure.<br>Nombre d'étages: compatible avec la pression maximum.<br>Numero stadi: compatibilmente con la pressione massima di esercizio.                                 |      |      |
| Type<br>Type<br>Tipo   | MIN. | MAX. |
| PMA  | 2    | 5    |
| PMAS   | 2    | 5    |
| PMAH   | 2    | 8    |
| NB. For two-stage pumps only, reduce efficiency by one point.<br>Diminuer le rendement d'un point seulement pour les pompes à deux étages.<br>Solamente per le pompe a due stadi, ridurre di un punto il rendimento. |      |      |

|  |               |  |
|--|---------------|--|
| Wet moment of inertia J<br>Moment d'inertie J mouillé<br>Momento d'inertzia J bagnato<br>J=1/4PD <sup>2</sup> - [kg m <sup>2</sup> ] |               |  |
| Impeller type<br>Roue type<br>Girante tipo   | PMA(S/H)125/1 | For each additional stage<br>Pour chaque étage en plus<br>Per ogni stadio in più |
| Cast iron<br>Fonte<br>Ghisa  | 0,0907        | 0,0805   |
| Bronze<br>Bronze<br>Bronzo   | 0,0987        | 0,0885   |

|  |          |
|--|----------|
| Maximum permissible power<br>Puissances maximums admissibles<br>Massime potenze ammissibili  |          |
| Type / Type / Tipo   | N/n MAX. |
| PMA  | 0,18     |
| PMAS   | 0,18     |
| PMAH   | 0,25     |
| For seal limits and calculation formulas of the maximum permissible powers, see technical data section.<br>Consulter la section Données techniques pour connaître les limites des joints et les formules pour le calcul des puissances maximales admises.<br>Per i limiti tenute e le formule di calcolo delle massime potenze ammissibili, vedere sezione dati tecnici. |          |

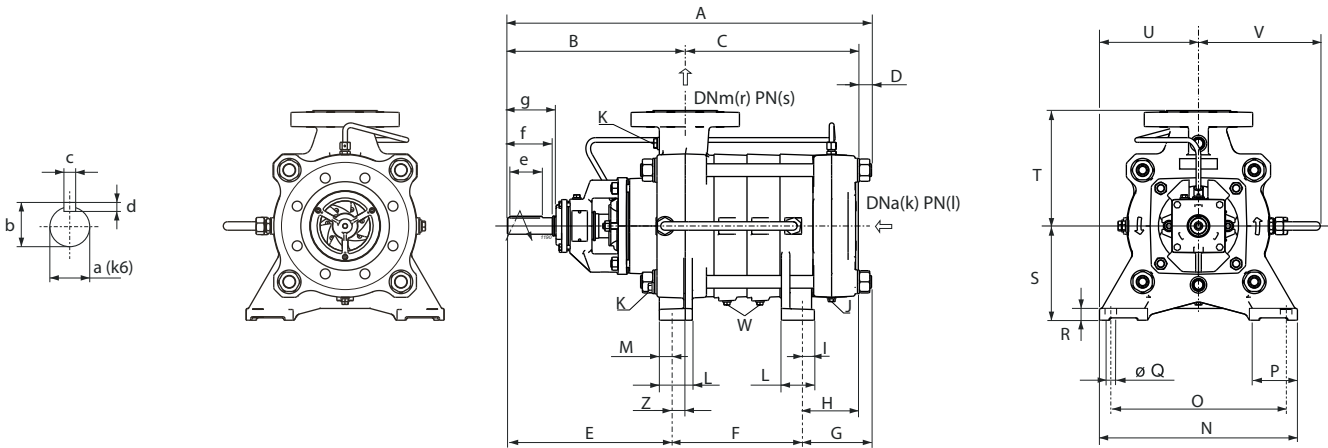
PERFORMANCES EACH INTERMEDIATE STAGE  
CARACTERISTIQUES POUR CHAQUE ETAGE  
PRESTAZIONI PER STADIO



|           |  | Capacity - Débit - Portata |   |      |       |       |       |       |      |       |       |       |       |      |       |       |       |       |      |       |       |       |  |  |
|-----------|--|----------------------------|---|------|-------|-------|-------|-------|------|-------|-------|-------|-------|------|-------|-------|-------|-------|------|-------|-------|-------|--|--|
| Dna x DNm | Impeller type<br>Roue type<br>Girante tipo | [l/s]                      | 0 | 40   | 44    | 48    | 52    | 56    | 60   | 64    | 68    | 72    | 76    | 80   | 84    | 88    | 92    | 96    | 100  | 104   | 108   | 112   |  |  |
|           |  | [m <sup>3</sup> /h]        | 0 | 144  | 158,4 | 172,8 | 187,2 | 201,6 | 216  | 230,4 | 244,8 | 259,2 | 273,6 | 288  | 302,4 | 316,8 | 331,2 | 345,6 | 360  | 374,4 | 388,8 | 403,2 |  |  |
|           |  | [l/min]                    | 0 | 2400 | 2640  | 2880  | 3120  | 3360  | 3600 | 3840  | 4080  | 4320  | 4560  | 4800 | 5040  | 5280  | 5520  | 5760  | 6000 | 6240  | 6480  | 6720  |  |  |

|         |   | PMA(S/H)125/1 |      |      |      |      |      |      |      |      |      |      |      |      |      |      |      |     |      |     |     |     |     |  |
|---------|---|---------------|------|------|------|------|------|------|------|------|------|------|------|------|------|------|------|-----|------|-----|-----|-----|-----|--|
| 200x125 | F | [m]           | 69   | 61   | 62   | 60   | 57   | 57   | 54   | 52   | 49,5 | 47   | 43,5 | 40,5 | 37,5 | 35,5 |      |     |      |     |     |     |     |  |
|         |   | [kW]          | 39,5 | 39   | 40,5 | 42   | 42   | 43,5 | 43,5 | 44,5 | 46   | 45,5 | 46,5 | 47,5 | 49   |      |      |     |      |     |     |     |     |  |
| 200x125 | E | [m]           | 79   | 72   | 70   | 68   | 69   | 67   | 65   | 62   | 60   | 57   | 54   | 51   | 49   | 45,5 | 42,5 | 41  |      |     |     |     |     |  |
|         |   | [kW]          | 45   | 46,5 | 48,5 | 48   | 49,5 | 51   | 52,5 | 52,5 | 54   | 55   | 56,5 | 58   | 58   | 59,5 | 62,5 |     |      |     |     |     |     |  |
| 200x125 | D | [m]           | 88   | 83   | 81   | 79   | 77   | 75   | 73   | 71   | 69   | 68   | 65   | 62   | 59   | 56   | 53   | 50  | 47,5 |     |     |     |     |  |
|         |   | [kW]          | 49,5 | 51,5 | 53,5 | 55   | 57,5 | 59   | 60,5 | 62   | 62   | 63,5 | 65   | 66,5 | 69   | 69,5 | 71   | 73  |      |     |     |     |     |  |
| 200x125 | C | [m]           | 100  |      | 87   | 87   | 86   | 85   | 83   | 81   | 79   | 77   | 75   | 72   | 70   | 67   | 64   | 61  | 58   | 54  | 51  |     |     |  |
|         |   | [kW]          |      |      | 62,5 | 64   | 65,5 | 67   | 68,5 | 70,5 | 72   | 73,5 | 75   | 76   | 78   | 79   | 81   | 82  | 84   | 86  | 87  |     |     |  |
| 200x125 | B | [m]           | 112  |      | 98   | 98   | 98   | 97   | 96   | 94   | 92   | 90   | 85   | 83   | 81   | 78   | 75   | 72  | 69   | 66  | 62  | 59  |     |  |
|         |   | [kW]          |      |      | 69,5 | 70,5 | 72   | 74   | 75   | 77   | 79   | 81   | 85   | 87   | 89   | 90   | 92   | 93  | 95   | 96  | 98  | 99  |     |  |
| 200x125 | A | [m]           | 130  |      |      |      | 114  | 114  | 113  | 105  | 105  | 104  | 102  | 101  | 99   | 96   | 92   | 90  | 87   | 84  | 81  | 78  | 75  |  |
|         |   | [kW]          |      |      |      |      | 81   | 83   | 85   | 91   | 92   | 94   | 96   | 98   | 100  | 102  | 106  | 108 | 110  | 112 | 113 | 114 | 116 |  |
|         |   | NPSH          |      |      |      |      |      |      |      |      |      |      |      |      |      |      |      |     |      |     |     |     |     |  |
|         |   | [m]           |      | 4,2  | 4,1  | 4,1  | 4,2  | 4,2  | 4,2  | 4,3  | 4,4  | 4,5  | 4,7  | 4,9  | 5,2  | 5,5  | 5,8  | 6,3 | 6,9  | 7,7 | 8,8 | 9,9 |     |  |

Overall dimensions and weights  
 Dimensions d'encombrement et poids  
 Dimensioni di ingombro e pesi



| Series<br>Série<br>Serie | Type<br>Type<br>Tipo | A    | B   | C   | D    | E   | F    | G   | H   | S   | T   | U   | V   | Z  | Weight<br>Poids<br>Peso |
|--------------------------|----------------------|------|-----|-----|------|-----|------|-----|-----|-----|-----|-----|-----|----|-------------------------|
|                          |                      | [mm] |     |     |      |     |      |     |     |     |     |     |     |    | [kg]                    |
| PMA(S/H)                 | 125/2                | 857  | 462 | 357 | 37,5 | 419 | 200  | 203 | 165 | 280 | 320 | 326 | 320 | 43 | 369                     |
| PMA(S/H)                 | 125/3                | 922  | 462 | 422 | 37,5 | 419 | 300  | 203 | 165 | 280 | 320 | 326 | 320 | 43 | 416                     |
| PMA(S/H)                 | 125/4                | 987  | 462 | 487 | 37,5 | 419 | 400  | 203 | 165 | 280 | 320 | 326 | 320 | 43 | 463                     |
| PMA(S/H)                 | 125/5                | 1052 | 462 | 552 | 37,5 | 419 | 500  | 203 | 165 | 280 | 320 | 326 | 320 | 43 | 510                     |
| PMA(S/H)                 | 125/6                | 1117 | 462 | 617 | 37,5 | 419 | 600  | 203 | 165 | 280 | 320 | 326 | 320 | 43 | 557                     |
| PMA(S/H)                 | 125/7                | 1182 | 462 | 682 | 37,5 | 419 | 700  | 203 | 165 | 280 | 320 | 326 | 320 | 43 | 604                     |
| PMA(S/H)                 | 125/8                | 1247 | 462 | 747 | 37,5 | 419 | 800  | 203 | 165 | 280 | 320 | 326 | 320 | 43 | 651                     |
| PMA(S/H)                 | 125/9                | 1312 | 462 | 812 | 37,5 | 419 | 900  | 203 | 165 | 280 | 320 | 326 | 320 | 43 | 698                     |
| PMA(S/H)                 | 125/10               | 1377 | 462 | 877 | 37,5 | 419 | 1000 | 203 | 165 | 280 | 320 | 326 | 320 | 43 | 745                     |

| Foot dimensions<br>Dimensions des pieds<br>Dimensioni dei piedi |     |    |     |     |     |    |    |
|---|-----|----|-----|-----|-----|----|----|
| I   | L   | M  | N   | O   | P   | Q  | R  |
| [mm]  |     |    |     |     |     |    |    |
| 29,5  | 100 | 32 | 570 | 460 | 145 | 24 | 35 |

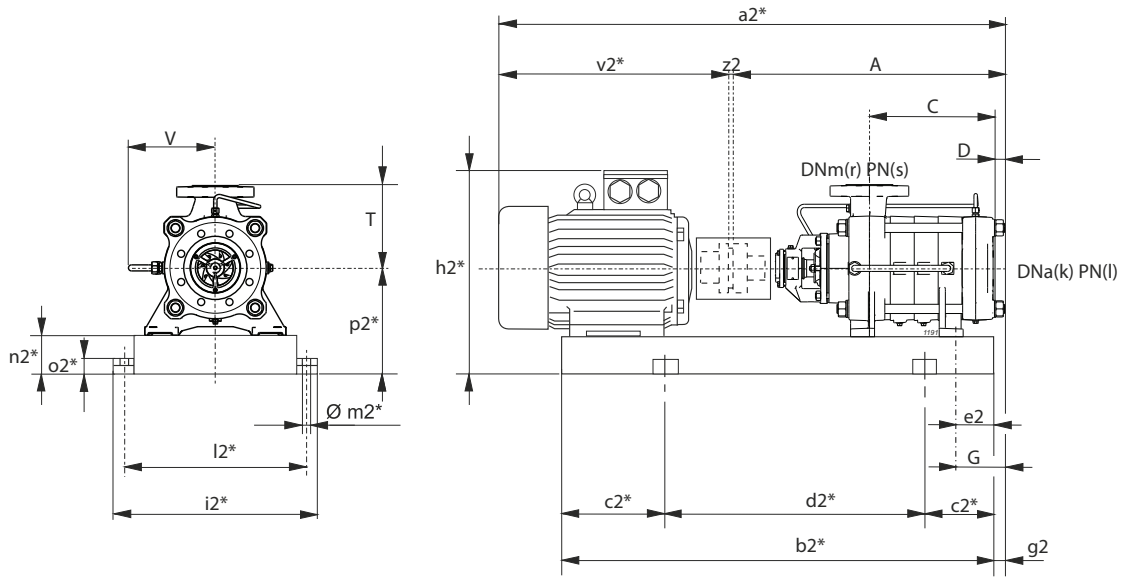
| Shaft projection<br>Saille d'arbre<br>Sporgenza d'albero |      |    |   |     |     |     |
|--|------|----|---|-----|-----|-----|
| a  | b    | c  | d | e   | f   | g   |
| [mm]   |      |    |   |     |     |     |
| 45   | 48,5 | 14 | 9 | 100 | 110 | 125 |

| Flanges<br>Brides<br>Flange |            |           |            |           |
|-----------------------------|------------|-----------|------------|-----------|
| Type<br>Type<br>Tipo        | (k)<br>DNa | (l)<br>PN | (r)<br>DNm | (s)<br>PN |
|                             | [mm]       | [bar]     | [mm]       | [bar]     |
| PMA                         | 200        | 40        | 125        | 40        |
| PMAS                        | 200        | 40        | 125        | 63        |
| PMAH                        | 200        | 40        | 125        | 100       |

| Plugs<br>Bouchons<br>Tappi |       |      |
|----------------------------|-------|------|
| J                          | K     | W    |
| G1/4                       | G 1/2 | G1/4 |

Selection - dimensions and weights for base mounted electric pumps  
 Sélection - dimensions et poids des électropompes sur socle  
 Selezione - dimensioni e pesi elettropompe su base

COUPLINGS WITH STANDARDIZED ENCLOSED ELECTRIC MOTORS  
 ACCOUPLEMENTS AVEC MOTEURS ÉLECTRIQUES FERMÉS NORMALISÉS  
 ACCOPIAMENTI CON MOTORI ELETTRICI CHIUSI NORMALIZZATI



$g2 = G - e2$

\* Valori indicativi in funzione della marca di motore utilizzato  
 Indicatives values according to the type of motor installed

| Pump<br>Pompe<br>Pompa   |                      | Motor<br>Moteur<br>Motore |                          | BGAMA                | A      | C   | D    | G     | T   | V   | a2*    | b2*  | c2* | d2*  | e2  | h2*  | i2* | k   | l  | l2* | m2* | n2* | o2* | p2* | r   | s   | v2*  | z2 | Weight<br>Poids<br>Peso |      |
|--------------------------|----------------------|---------------------------|--------------------------|----------------------|--------|-----|------|-------|-----|-----|--------|------|-----|------|-----|------|-----|-----|----|-----|-----|-----|-----|-----|-----|-----|------|----|-------------------------|------|
| Series<br>Série<br>Serie | Type<br>Type<br>Tipo | [kW]                      | Size<br>Taille<br>Grand. | Type<br>Type<br>Tipo | [mm]   |     |      |       |     |     |        |      |     |      |     |      |     |     |    |     |     |     |     |     |     |     |      |    |                         | [kg] |
| PMA(S/H)                 | 125/2                | 110                       | 315S                     | 800/IR               | 856,5  | 357 | 37,5 | 202,5 | 320 | 320 | 2041,5 | 1575 | 250 | 1075 | 90  | 1030 | 780 | 200 | 40 | 730 | 22  | 160 | 50  | 475 | 125 | (2) | 1181 | 4  | 1472                    |      |
| PMA(S/H)                 | /2                   | 132                       | 315M                     | 335/IR               | 856,5  | 357 | 37,5 | 202,5 | 320 | 320 | 2151,5 | 1685 | 300 | 1085 | 90  | 1030 | 780 | 200 | 40 | 730 | 22  | 160 | 50  | 475 | 125 | (2) | 1291 | 4  | 1548                    |      |
| PMA(S/H)                 | /2                   | 160                       | 315L                     | 335/IR               | 856,5  | 357 | 37,5 | 202,5 | 320 | 320 | 2151,5 | 1685 | 300 | 1085 | 90  | 1030 | 780 | 200 | 40 | 730 | 22  | 160 | 50  | 475 | 125 | (2) | 1291 | 4  | 1626                    |      |
| PMA(S/H)                 | /2                   | 200                       | 315L                     | 336/IE4/LR           | 856,5  | 357 | 37,5 | 202,5 | 320 | 320 | 2241,5 | 1775 | 300 | 1175 | 198 | 1030 | 780 | 200 | 40 | 730 | 22  | 160 | 50  | 475 | 125 | (2) | 1381 | 4  | 1771                    |      |
| PMA(S/H)                 | /2                   | 250                       | 355M                     | 337/LR               | 856,5  | 357 | 37,5 | 202,5 | 320 | 320 | 2386,5 | 1759 | 300 | 1159 | 110 | 1136 | 880 | 200 | 40 | 830 | 22  | 180 | 50  | 535 | 125 | (2) | 1526 | 4  | 2167                    |      |
| PMA(S/H)                 | /2                   | 280                       | 355M                     | 4003/MR              | 856,5  | 357 | 37,5 | 202,5 | 320 | 320 | 2386,5 | 1759 | 300 | 1159 | 110 | 1136 | 880 | 200 | 40 | 830 | 22  | 180 | 50  | 535 | 125 | (2) | 1526 | 4  | 2292                    |      |
| PMA(S/H)                 | 125/3                | 160                       | 315L                     | 338/LR               | 921,5  | 422 | 37,5 | 202,5 | 320 | 320 | 2216,5 | 1785 | 300 | 1185 | 90  | 1030 | 780 | 200 | 40 | 730 | 22  | 160 | 50  | 475 | 125 | (2) | 1291 | 4  | 1677                    |      |
| PMA(S/H)                 | /3                   | 200                       | 315L                     | 338/IE4/LR           | 921,5  | 422 | 37,5 | 202,5 | 320 | 320 | 2306,5 | 1875 | 300 | 1275 | 198 | 1030 | 780 | 200 | 40 | 730 | 22  | 160 | 50  | 475 | 125 | (2) | 1381 | 4  | 1822                    |      |
| PMA(S/H)                 | /3                   | 250                       | 355L                     | 339/LR               | 921,5  | 422 | 37,5 | 202,5 | 320 | 320 | 2451,5 | 1929 | 300 | 1329 | 110 | 1136 | 880 | 200 | 40 | 830 | 22  | 180 | 50  | 535 | 125 | (2) | 1526 | 4  | 2222                    |      |
| PMA(S/H)                 | /3                   | 280                       | 355L                     | 339/LR               | 921,5  | 422 | 37,5 | 202,5 | 320 | 320 | 2451,5 | 1929 | 300 | 1329 | 110 | 1136 | 880 | 200 | 40 | 830 | 22  | 180 | 50  | 535 | 125 | (2) | 1526 | 4  | 2347                    |      |
| PMA(S/H)                 | /3                   | 315                       | 355L                     | 339/MR               | 921,5  | 422 | 37,5 | 202,5 | 320 | 320 | 2451,5 | 1929 | 300 | 1329 | 110 | 1136 | 880 | 200 | 40 | 830 | 22  | 180 | 50  | 535 | 125 | (2) | 1526 | 4  | 2347                    |      |
| PMA(S/H)                 | /3                   | 355                       | 355L                     | 339/MR               | 921,5  | 422 | 37,5 | 202,5 | 320 | 320 | 2451,5 | 1929 | 300 | 1329 | 110 | 1136 | 880 | 200 | 40 | 830 | 22  | 180 | 50  | 535 | 125 | (2) | 1526 | 4  | 2337                    |      |
| PMA(S/H)                 | 125/4                | 200                       | 315L                     | 806/IE4/LR           | 986,5  | 487 | 37,5 | 202,5 | 320 | 320 | 2371,5 | 1975 | 350 | 1275 | 198 | 1030 | 780 | 200 | 40 | 730 | 22  | 160 | 50  | 475 | 125 | (2) | 1381 | 4  | 1873                    |      |
| PMA(S/H)                 | /4                   | 250                       | 355M                     | 340/LR               | 986,5  | 487 | 37,5 | 202,5 | 320 | 320 | 2516,5 | 1959 | 350 | 1259 | 110 | 1136 | 880 | 200 | 40 | 830 | 22  | 180 | 50  | 535 | 125 | (2) | 1526 | 4  | 2273                    |      |
| PMA(S/H)                 | /4                   | 280                       | 355L                     | 340/MR               | 986,5  | 487 | 37,5 | 202,5 | 320 | 320 | 2516,5 | 2029 | 350 | 1329 | 110 | 1136 | 880 | 200 | 40 | 830 | 22  | 180 | 50  | 535 | 125 | (2) | 1526 | 4  | 2398                    |      |
| PMA(S/H)                 | /4                   | 315                       | 355L                     | 340/MR               | 986,5  | 487 | 37,5 | 202,5 | 320 | 320 | 2516,5 | 2029 | 350 | 1329 | 110 | 1136 | 880 | 200 | 40 | 830 | 22  | 180 | 50  | 535 | 125 | (2) | 1526 | 4  | 2398                    |      |
| PMA(S/H)                 | /4                   | 355                       | 355L                     | 340/MR               | 986,5  | 487 | 37,5 | 202,5 | 320 | 320 | 2516,5 | 2029 | 350 | 1329 | 110 | 1136 | 880 | 200 | 40 | 830 | 22  | 180 | 50  | 535 | 125 | (2) | 1526 | 4  | 2388                    |      |
| PMA(S/H)                 | 125/5                | 280                       | 355L                     | 341/MR               | 1051,5 | 552 | 37,5 | 202,5 | 320 | 320 | 2581,5 | 2129 | 350 | 1429 | 110 | 1136 | 880 | 200 | 40 | 830 | 22  | 180 | 50  | 535 | 125 | (2) | 1526 | 4  | 2450                    |      |
| PMA(S/H)                 | /5                   | 315                       | 355L                     | 341/MR               | 1051,5 | 552 | 37,5 | 202,5 | 320 | 320 | 2581,5 | 2129 | 350 | 1429 | 110 | 1136 | 880 | 200 | 40 | 830 | 22  | 180 | 50  | 535 | 125 | (2) | 1526 | 4  | 2450                    |      |
| PMA(S/H)                 | /5                   | 355                       | 355L                     | 341/MR               | 1051,5 | 552 | 37,5 | 202,5 | 320 | 320 | 2581,5 | 2129 | 350 | 1429 | 110 | 1136 | 880 | 200 | 40 | 830 | 22  | 180 | 50  | 535 | 125 | (2) | 1526 | 4  | 2440                    |      |
| PMA(H)                   | 125/6                | 315                       | 355L                     | 4000/MR              | 1116,5 | 617 | 37,5 | 202,5 | 320 | 320 | 2646,5 | 2229 | 350 | 1529 | 110 | 1136 | 880 | 200 | 40 | 830 | 22  | 180 | 50  | 535 | 125 | (2) | 1526 | 4  | 2501                    |      |
| PMA(H)                   | /6                   | 355                       | 355L                     | 4000/MR              | 1116,5 | 617 | 37,5 | 202,5 | 320 | 320 | 2646,5 | 2229 | 350 | 1529 | 110 | 1136 | 880 | 200 | 40 | 830 | 22  | 180 | 50  | 535 | 125 | (2) | 1526 | 4  | 2491                    |      |
| PMA(H)                   | 125/7                | 355                       | 355L                     | 4001/MR              | 1181,5 | 682 | 37,5 | 202,5 | 320 | 320 | 2711,5 | 2329 | 400 | 1529 | 110 | 1136 | 880 | 200 | 40 | 830 | 22  | 180 | 50  | 535 | 125 | (2) | 1526 | 4  | 2542                    |      |

BGAMA = Base and coupling

\* = Indicatives values according to the type of motor installed

○ Motor in IE4 efficiency class according to EU REGULATION 2019/1781. Available in other efficiency classes for non-EU markets.

(2) PMA=40 bar PMAS=63 bar PMAH=100 bar

Contact the sales network for couplings exceeding 355 kW.

BGAMA = Socle et accouplement

\* = Valeurs indicatives en fonction de la marque du moteur utilisé

○ Moteur en classe de rendement IE4 conformément au RÈGLEMENT UE2019/1781. Disponibilité en différentes classes de rendement pour les marchés hors UE.

(2) PMA=40 bar PMAS=63 bar PMAH=100 bar

Pour des accouplements supérieurs à 355 kW, contacter notre réseau de vente.

BGAMA = Base giunto e coprigiunto

\* = Valori indicativi in funzione della marca di motore utilizzato.

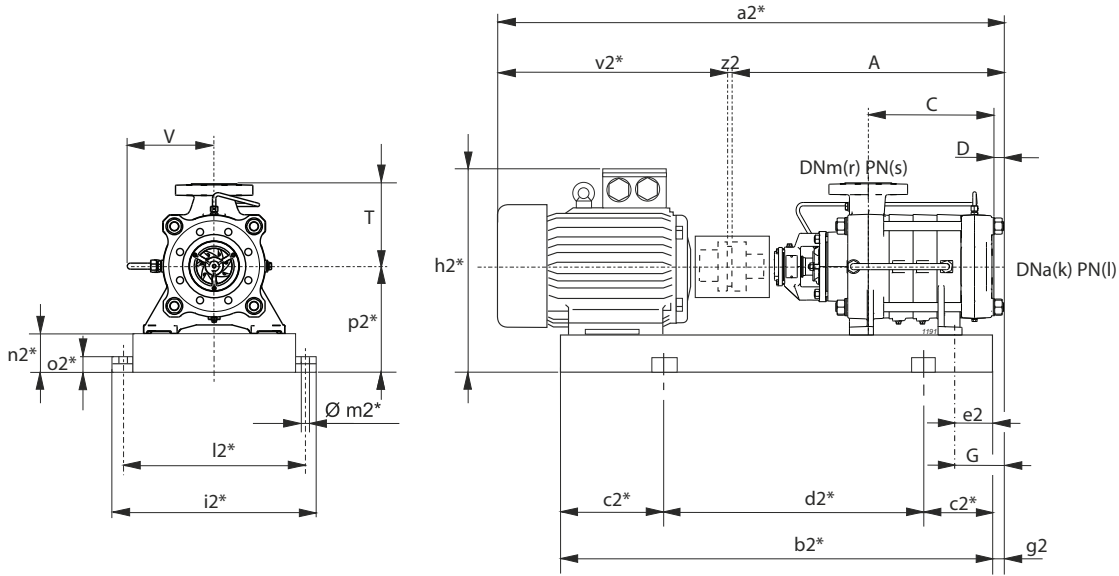
○ Motore in classe di efficienza IE4 in conformità al REGOLAMENTO UE2019/1781. Disponibili in altre classi di efficienza per mercati extra UE.

(2) PMA=40 bar PMAS=63 bar PMAH=100 bar

Per accoppiamenti superiori al 355 kW, contattare la rete di vendita.

Selection - dimensions and weights for base mounted electric pumps  
 Sélection - dimensions et poids des électropompes sur socle  
 Selezione - dimensioni e pesi elettropompe su base

COUPLINGS WITH STANDARDIZED ENCLOSED ELECTRIC MOTORS  
 ACCOUPLEMENTS AVEC MOTEURS ÉLECTRIQUES FERMÉS NORMALISÉS  
 ACCOPIAMENTI CON MOTORI ELETTRICI CHIUSI NORMALIZZATI



$g2 = G - e2$

\* Valori indicativi in funzione della marca di motore utilizzato  
 Indicatives values according to the type of motor installed

| Pump<br>Pompe<br>Pompa   | Motor<br>Moteur<br>Motore | BGAMA                    | A                    | C       | D      | G   | T    | V     | a2* | b2* | c2*    | d2*  | e2  | h2*  | i2* | k    | l   | l2* | m2* | n2* | o2* | p2* | r  | s   | v2* | z2   | Weight<br>Poids<br>Peso |   |      |
|--------------------------|---------------------------|--------------------------|----------------------|---------|--------|-----|------|-------|-----|-----|--------|------|-----|------|-----|------|-----|-----|-----|-----|-----|-----|----|-----|-----|------|-------------------------|---|------|
| Series<br>Série<br>Serie | Type<br>Type<br>Tipo      | Size<br>Taille<br>Grand. | Type<br>Type<br>Tipo | [mm]    |        |     |      |       |     |     |        |      |     |      |     |      |     |     |     |     |     |     |    |     |     | [kg] |                         |   |      |
| PMA(S/H)                 | 125/2                     | 15                       | 160L                 | 345/EP  | 856,5  | 357 | 37,5 | 202,5 | 320 | 320 | 1487,5 | 1220 | 200 | 820  | 60  | 671  | 700 | 200 | 40  | 650 | 20  | 140 | 42 | 420 | 125 | (2)  | 627                     | 4 | 622  |
| PMA(S/H)                 | /2                        | 18,5                     | 180M                 | 346/FP  | 856,5  | 357 | 37,5 | 202,5 | 320 | 320 | 1525,5 | 1230 | 200 | 830  | 60  | 690  | 700 | 200 | 40  | 650 | 20  | 140 | 42 | 420 | 125 | (2)  | 665                     | 4 | 701  |
| PMA(S/H)                 | /2                        | 22                       | 180L                 | 347/FP  | 856,5  | 357 | 37,5 | 202,5 | 320 | 320 | 1565,5 | 1268 | 200 | 868  | 60  | 690  | 700 | 200 | 40  | 650 | 20  | 140 | 42 | 420 | 125 | (2)  | 705                     | 4 | 722  |
| PMA(S/H)                 | /2                        | 30                       | 200L                 | 348/GP  | 856,5  | 357 | 37,5 | 202,5 | 320 | 320 | 1618,5 | 1303 | 200 | 903  | 60  | 720  | 700 | 200 | 40  | 650 | 20  | 140 | 42 | 420 | 125 | (2)  | 758                     | 4 | 756  |
| PMA(S/H)                 | /2                        | 37                       | 225S                 | 4008/HR | 856,5  | 357 | 37,5 | 202,5 | 320 | 320 | 1653,5 | 1334 | 200 | 934  | 60  | 750  | 700 | 200 | 40  | 650 | 20  | 140 | 42 | 420 | 125 | (2)  | 793                     | 4 | 770  |
| PMA(S/H)                 | 125/3                     | 22                       | 180L                 | 849/FP  | 921,5  | 422 | 37,5 | 202,5 | 320 | 320 | 1630,5 | 1368 | 250 | 868  | 60  | 690  | 700 | 200 | 40  | 650 | 20  | 140 | 42 | 420 | 125 | (2)  | 705                     | 4 | 772  |
| PMA(S/H)                 | /3                        | 30                       | 200L                 | 349/GP  | 921,5  | 422 | 37,5 | 202,5 | 320 | 320 | 1683,5 | 1403 | 250 | 903  | 60  | 720  | 700 | 200 | 40  | 650 | 20  | 140 | 42 | 420 | 125 | (2)  | 758                     | 4 | 806  |
| PMA(S/H)                 | /3                        | 37                       | 225S                 | 350/HR  | 921,5  | 422 | 37,5 | 202,5 | 320 | 320 | 1718,5 | 1434 | 250 | 934  | 60  | 750  | 700 | 200 | 40  | 650 | 20  | 140 | 42 | 420 | 125 | (2)  | 793                     | 4 | 820  |
| PMA(S/H)                 | /3                        | 45                       | 225M                 | 351/HR  | 921,5  | 422 | 37,5 | 202,5 | 320 | 320 | 1743,5 | 1459 | 250 | 959  | 60  | 750  | 700 | 200 | 40  | 650 | 20  | 140 | 42 | 420 | 125 | (2)  | 818                     | 4 | 863  |
| PMA(S/H)                 | /3                        | 55                       | 250M                 | 4009/IR | 921,5  | 422 | 37,5 | 202,5 | 320 | 320 | 1805,5 | 1501 | 250 | 1001 | 60  | 795  | 700 | 200 | 40  | 650 | 20  | 140 | 42 | 420 | 125 | (2)  | 880                     | 4 | 982  |
| PMA(S/H)                 | 125/4                     | 30                       | 200L                 | 352/GP  | 986,5  | 487 | 37,5 | 202,5 | 320 | 320 | 1748,5 | 1503 | 250 | 1003 | 60  | 720  | 700 | 200 | 40  | 650 | 20  | 140 | 42 | 420 | 125 | (2)  | 758                     | 4 | 857  |
| PMA(S/H)                 | /4                        | 37                       | 225S                 | 471/HR  | 986,5  | 487 | 37,5 | 202,5 | 320 | 320 | 1783,5 | 1534 | 250 | 1034 | 60  | 750  | 700 | 200 | 40  | 650 | 20  | 140 | 42 | 420 | 125 | (2)  | 793                     | 4 | 870  |
| PMA(S/H)                 | /4                        | 45                       | 225M                 | 472/HR  | 986,5  | 487 | 37,5 | 202,5 | 320 | 320 | 1808,5 | 1559 | 250 | 1059 | 60  | 750  | 700 | 200 | 40  | 650 | 20  | 140 | 42 | 420 | 125 | (2)  | 818                     | 4 | 913  |
| PMA(S/H)                 | /4                        | 55                       | 250M                 | 473/IR  | 986,5  | 487 | 37,5 | 202,5 | 320 | 320 | 1870,5 | 1601 | 250 | 1101 | 60  | 795  | 700 | 200 | 40  | 650 | 20  | 140 | 42 | 420 | 125 | (2)  | 880                     | 4 | 1032 |
| PMA(S/H)                 | /4                        | 75                       | 280S                 | 474/IR  | 986,5  | 487 | 37,5 | 202,5 | 320 | 320 | 2003,5 | 1648 | 250 | 1148 | 60  | 815  | 700 | 200 | 40  | 650 | 20  | 140 | 42 | 420 | 125 | (2)  | 1013                    | 4 | 1174 |
| PMA(S/H)                 | 125/5                     | 37                       | 225S                 | 813/HR  | 1051,5 | 552 | 37,5 | 202,5 | 320 | 320 | 1848,5 | 1634 | 250 | 1134 | 60  | 750  | 700 | 200 | 40  | 650 | 20  | 140 | 42 | 420 | 125 | (2)  | 793                     | 4 | 920  |
| PMA(S/H)                 | /5                        | 45                       | 225M                 | 475/HR  | 1051,5 | 552 | 37,5 | 202,5 | 320 | 320 | 1873,5 | 1659 | 300 | 1059 | 60  | 750  | 700 | 200 | 40  | 650 | 20  | 140 | 42 | 420 | 125 | (2)  | 818                     | 4 | 963  |
| PMA(S/H)                 | /5                        | 55                       | 250M                 | 476/IR  | 1051,5 | 552 | 37,5 | 202,5 | 320 | 320 | 1935,5 | 1701 | 300 | 1101 | 60  | 795  | 700 | 200 | 40  | 650 | 20  | 140 | 42 | 420 | 125 | (2)  | 880                     | 4 | 1082 |
| PMA(S/H)                 | /5                        | 75                       | 280S                 | 477/IR  | 1051,5 | 552 | 37,5 | 202,5 | 320 | 320 | 2068,5 | 1748 | 300 | 1148 | 60  | 815  | 700 | 200 | 40  | 650 | 20  | 140 | 42 | 420 | 125 | (2)  | 1013                    | 4 | 1224 |
| PMA(S/H)                 | /5                        | 90                       | 280M                 | 4005/LR | 1051,5 | 552 | 37,5 | 202,5 | 320 | 320 | 2119,5 | 1799 | 300 | 1199 | 60  | 815  | 700 | 200 | 40  | 650 | 20  | 140 | 42 | 420 | 125 | (2)  | 1064                    | 4 | 1289 |
| PMA(S/H)                 | 125/6                     | 45                       | 225M                 | 478/HR  | 1116,5 | 617 | 37,5 | 202,5 | 320 | 320 | 1938,5 | 1759 | 300 | 1159 | 60  | 750  | 700 | 200 | 40  | 650 | 20  | 140 | 42 | 420 | 125 | (2)  | 818                     | 4 | 1013 |
| PMA(S/H)                 | /6                        | 55                       | 250M                 | 479/IR  | 1116,5 | 617 | 37,5 | 202,5 | 320 | 320 | 2000,5 | 1801 | 300 | 1201 | 60  | 795  | 700 | 200 | 40  | 650 | 20  | 140 | 42 | 420 | 125 | (2)  | 880                     | 4 | 1133 |
| PMA(S/H)                 | /6                        | 75                       | 280S                 | 480/IR  | 1116,5 | 617 | 37,5 | 202,5 | 320 | 320 | 2133,5 | 1848 | 300 | 1248 | 60  | 815  | 700 | 200 | 40  | 650 | 20  | 140 | 42 | 420 | 125 | (2)  | 1013                    | 4 | 1274 |
| PMA(S/H)                 | /6                        | 90                       | 280M                 | 481/LR  | 1116,5 | 617 | 37,5 | 202,5 | 320 | 320 | 2184,5 | 1899 | 300 | 1299 | 60  | 815  | 700 | 200 | 40  | 650 | 20  | 140 | 42 | 420 | 125 | (2)  | 1064                    | 4 | 1339 |
| PMA(S/H)                 | /6                        | 110                      | 315S                 | 498/LR  | 1116,5 | 617 | 37,5 | 202,5 | 320 | 320 | 2331,5 | 2005 | 350 | 1305 | 90  | 1030 | 780 | 200 | 40  | 730 | 22  | 160 | 50 | 475 | 125 | (2)  | 1211                    | 4 | 1671 |
| PMA(S/H)                 | 125/7                     | 55                       | 250M                 | 482/IR  | 1181,5 | 682 | 37,5 | 202,5 | 320 | 320 | 2065,5 | 1901 | 300 | 1301 | 60  | 795  | 700 | 200 | 40  | 650 | 20  | 140 | 42 | 420 | 125 | (2)  | 880                     | 4 | 1183 |
| PMA(S/H)                 | /7                        | 75                       | 280S                 | 483/IR  | 1181,5 | 682 | 37,5 | 202,5 | 320 | 320 | 2198,5 | 1948 | 300 | 1348 | 60  | 815  | 700 | 200 | 40  | 650 | 20  | 140 | 42 | 420 | 125 | (2)  | 1013                    | 4 | 1324 |
| PMA(S/H)                 | /7                        | 90                       | 280M                 | 484/LR  | 1181,5 | 682 | 37,5 | 202,5 | 320 | 320 | 2249,5 | 1999 | 350 | 1299 | 60  | 815  | 700 | 200 | 40  | 650 | 20  | 140 | 42 | 420 | 125 | (2)  | 1064                    | 4 | 1389 |
| PMA(S/H)                 | /7                        | 110                      | 315S                 | 485/LR  | 1181,5 | 682 | 37,5 | 202,5 | 320 | 320 | 2396,5 | 2105 | 350 | 1405 | 90  | 1030 | 780 | 200 | 40  | 730 | 22  | 160 | 50 | 475 | 125 | (2)  | 1211                    | 4 | 1722 |
| PMA(S/H)                 | /7                        | 132                      | 315M                 | 4007/MR | 1181,5 | 682 | 37,5 | 202,5 | 320 | 320 | 2506,5 | 2164 | 350 | 1464 | 90  | 1030 | 780 | 200 | 40  | 730 | 22  | 160 | 50 | 475 | 125 | (2)  | 1321                    | 4 | 1844 |
| PMA(S/H)                 | 125/8                     | 55                       | 250M                 | 818/IR  | 1246,5 | 747 | 37,5 | 202,5 | 320 | 320 | 2130,5 | 2001 | 350 | 1301 | 60  | 795  | 700 | 200 | 40  | 650 | 20  | 140 | 42 | 420 | 125 | (2)  | 880                     | 4 | 1233 |
| PMA(S/H)                 | /8                        | 75                       | 280S                 | 486/IR  | 1246,5 | 747 | 37,5 | 202,5 | 320 | 320 | 2263,5 | 2048 | 350 | 1348 | 60  | 815  | 700 | 200 | 40  | 650 | 20  | 140 | 42 | 420 | 125 | (2)  | 1013                    | 4 | 1374 |

BGAMA = Base and coupling

\* = Indicatives values according to the type of motor installed

○ Motor in IE4 efficiency class according to EU REGULATION 2019/1781. Available in other efficiency classes for non-EU markets.

(2) PMA=40 bar PMAS=63 bar PMAH=100 bar

BGAMA = Socle et accouplement

\* = Valeurs indicatives en fonction de la marque du moteur utilisé

○ Moteur en classe de rendement IE4 conformément au RÈGLEMENT UE2019/1781. Disponibilité en différentes classes de rendement pour les marchés hors UE.

(2) PMA=40 bar PMAS=63 bar PMAH=100 bar

BGAMA = Base giunto e coprigiunto

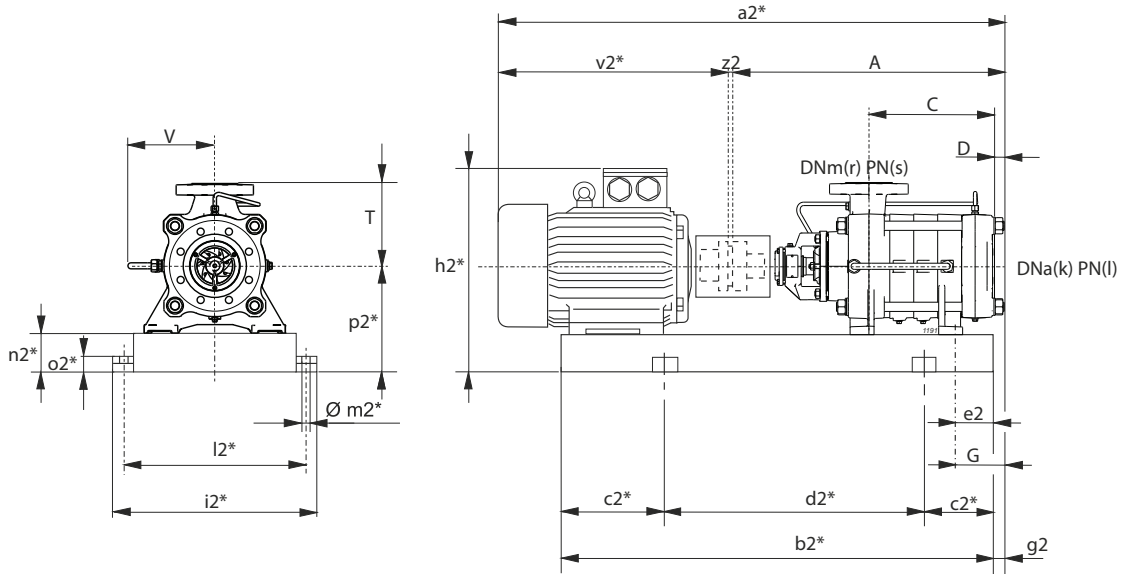
\* = Valori indicativi in funzione della marca di motore utilizzato.

○ Motore in classe di efficienza IE4 in conformità al REGOLAMENTO UE2019/1781. Disponibili in altre classi di efficienza per mercati extra UE.

(2) PMA=40 bar PMAS=63 bar PMAH=100 bar

Selection - dimensions and weights for base mounted electric pumps  
 Sélection - dimensions et poids des électropompes sur socle  
 Selezione - dimensioni e pesi elettropompe su base

COUPLINGS WITH STANDARDIZED ENCLOSED ELECTRIC MOTORS  
 ACCOUPLEMENTS AVEC MOTEURS ÉLECTRIQUES FERMÉS NORMALISÉS  
 ACCOPPIAMENTI CON MOTORI ELETTRICI CHIUSI NORMALIZZATI



$g2 = G - e2$

\* Valori indicativi in funzione della marca di motore utilizzato  
 Indicatives values according to the type of motor installed

| Pump<br>Pompe<br>Pompa   |                      | Motor<br>Moteur<br>Motore |                          | BGAMA                | A      | C   | D    | G     | T   | V   | a2*    | b2*  | c2* | d2*  | e2  | h2*  | i2* | k   | l  | l2* | m2* | n2* | o2* | p2* | r   | s   | v2*  | z2 | Weight<br>Poids<br>Peso |  |      |
|--------------------------|----------------------|---------------------------|--------------------------|----------------------|--------|-----|------|-------|-----|-----|--------|------|-----|------|-----|------|-----|-----|----|-----|-----|-----|-----|-----|-----|-----|------|----|-------------------------|--|------|
| Series<br>Série<br>Serie | Type<br>Type<br>Tipo | [kW]                      | Size<br>Taille<br>Grand. | Type<br>Type<br>Tipo | [mm]   |     |      |       |     |     |        |      |     |      |     |      |     |     |    |     |     |     |     |     |     |     |      |    |                         |  | [kg] |
| PMA(S/H)                 | /8                   | 90                        | 280M                     | 487/LR               | 1246,5 | 747 | 37,5 | 202,5 | 320 | 320 | 2314,5 | 2099 | 350 | 1399 | 60  | 815  | 700 | 200 | 40 | 650 | 20  | 140 | 42  | 420 | 125 | (2) | 1064 | 4  | 1439                    |  |      |
| PMA(S/H)                 | /8                   | 110                       | 315S                     | 488/LR               | 1246,5 | 747 | 37,5 | 202,5 | 320 | 320 | 2461,5 | 2205 | 350 | 1505 | 90  | 1030 | 780 | 200 | 40 | 730 | 22  | 160 | 50  | 475 | 125 | (2) | 1211 | 4  | 1773                    |  |      |
| PMA(S/H)                 | /8                   | 132                       | 315M                     | 489/MR               | 1246,5 | 747 | 37,5 | 202,5 | 320 | 320 | 2571,5 | 2264 | 400 | 1464 | 90  | 1030 | 780 | 200 | 40 | 730 | 22  | 160 | 50  | 475 | 125 | (2) | 1321 | 4  | 1895                    |  |      |
| PMA(S/H)                 | 125/9                | 75                        | 280S                     | 490/IR               | 1311,5 | 812 | 37,5 | 202,5 | 320 | 320 | 2328,5 | 2148 | 350 | 1448 | 60  | 815  | 700 | 200 | 40 | 650 | 20  | 140 | 42  | 420 | 125 | (2) | 1013 | 4  | 1425                    |  |      |
| PMA(S/H)                 | /9                   | 90                        | 280M                     | 491/LR               | 1311,5 | 812 | 37,5 | 202,5 | 320 | 320 | 2379,5 | 2199 | 350 | 1499 | 60  | 815  | 700 | 200 | 40 | 650 | 20  | 140 | 42  | 420 | 125 | (2) | 1064 | 4  | 1489                    |  |      |
| PMA(S/H)                 | /9                   | 110                       | 315S                     | 492/LR               | 1311,5 | 812 | 37,5 | 202,5 | 320 | 320 | 2526,5 | 2305 | 400 | 1505 | 90  | 1030 | 780 | 200 | 40 | 730 | 22  | 160 | 50  | 475 | 125 | (2) | 1211 | 4  | 1824                    |  |      |
| PMA(S/H)                 | /9                   | 132                       | 315M                     | 493/MR               | 1311,5 | 812 | 37,5 | 202,5 | 320 | 320 | 2636,5 | 2415 | 400 | 1615 | 90  | 1030 | 780 | 200 | 40 | 730 | 22  | 160 | 50  | 475 | 125 | (2) | 1321 | 4  | 1948                    |  |      |
| PMA(S/H)                 | /9                   | 160                       | 315L                     | 493/MR               | 1311,5 | 812 | 37,5 | 202,5 | 320 | 320 | 2636,5 | 2415 | 400 | 1615 | 90  | 1030 | 780 | 200 | 40 | 730 | 22  | 160 | 50  | 475 | 125 | (2) | 1321 | 4  | 2043                    |  |      |
| PMA(S/H)                 | 125/10               | 75                        | 280S                     | 494/IR               | 1376,5 | 877 | 37,5 | 202,5 | 320 | 320 | 2393,5 | 2248 | 350 | 1548 | 60  | 815  | 700 | 200 | 40 | 650 | 20  | 140 | 42  | 420 | 125 | (2) | 1013 | 4  | 1475                    |  |      |
| PMA(S/H)                 | /10                  | 90                        | 280M                     | 495/LR               | 1376,5 | 877 | 37,5 | 202,5 | 320 | 320 | 2444,5 | 2299 | 400 | 1499 | 60  | 815  | 700 | 200 | 40 | 650 | 20  | 140 | 42  | 420 | 125 | (2) | 1064 | 4  | 1539                    |  |      |
| PMA(S/H)                 | /10                  | 110                       | 315S                     | 496/LR               | 1376,5 | 877 | 37,5 | 202,5 | 320 | 320 | 2591,5 | 2405 | 400 | 1605 | 90  | 1030 | 780 | 200 | 40 | 730 | 22  | 160 | 50  | 475 | 125 | (2) | 1211 | 4  | 1875                    |  |      |
| PMA(S/H)                 | /10                  | 132                       | 315M                     | 497/MR               | 1376,5 | 877 | 37,5 | 202,5 | 320 | 320 | 2701,5 | 2515 | 400 | 1715 | 90  | 1030 | 780 | 200 | 40 | 730 | 22  | 160 | 50  | 475 | 125 | (2) | 1321 | 4  | 1999                    |  |      |
| PMA(S/H)                 | /10                  | 160                       | 315L                     | 497/MR               | 1376,5 | 877 | 37,5 | 202,5 | 320 | 320 | 2701,5 | 2515 | 400 | 1715 | 90  | 1030 | 780 | 200 | 40 | 730 | 22  | 160 | 50  | 475 | 125 | (2) | 1321 | 4  | 2094                    |  |      |
| PMA(S/H)                 | /10                  | 200                       | 315L                     | 497/IE4/MR           | 1376,5 | 877 | 37,5 | 202,5 | 320 | 320 | 2791,5 | 2606 | 450 | 1706 | 198 | 1030 | 780 | 200 | 40 | 730 | 22  | 160 | 50  | 475 | 125 | (2) | 1411 | 4  | 2254                    |  |      |

BGAMA = Base and coupling

\* = Indicatives values according to the type of motor installed

○ Motor in IE4 efficiency class according to EU REGULATION 2019/1781. Available in other efficiency classes for non-EU markets.

(2) PMA=40 bar PMAS=63 bar PMAH=100 bar

BGAMA = Socle et accouplement

\* = Valeurs indicatives en fonction de la marque du moteur utilisé

○ Moteur en classe de rendement IE4 conformément au RÉGLEMENT UE2019/1781. Disponibilités en différentes classes de rendement pour les marchés hors UE.

(2) PMA=40 bar PMAS=63 bar PMAH=100 bar

BGAMA = Base giunto e coprigiunto

\* = Valori indicativi in funzione della marca di motore utilizzato.

○ Motore in classe di efficienza IE4 in conformità al REGOLAMENTO UE2019/1781. Disponibili in altre classi di efficienza per mercati extra UE.

(2) PMA=40 bar PMAS=63 bar PMAH=100 bar